



RIVIERA
LUXURY MOTOR YACHTS

 **BELIZE**



A totally new tradition reaches a higher level

Sedan World Premiere - 2018

Daybridge World Premiere - 2019

The Belize 66 Sedan and Daybridge: A totally new tradition reaches a higher level

Luxury marque Belize is nearing completion of the latest in its line of classically-styled motor yachts, the Belize 66.

The new model builds on the heritage, first unveiled in 2011, of a luxury motor yacht that evokes the styles of a bygone era of yachting, of gleaming hand-crafted interiors and, most importantly, of individuality.

The original Belize 54 quickly attracted owners who, after many years of boating, knew exactly what they wanted and had found a passionate team who could help them create their ultimate motor yacht.

Belize co-founder and Riviera CEO Wes Moxey said: "The marque was born of the desire to work with experienced boaters to create a distinctive yacht and we embraced their demands for the highest quality craftsmanship."

Today, almost 30 Belize motor yachts are cruising international waters, from the coral reefs of Queensland to the Great Lakes and New England regions of the United States where style and tradition are part of the yachting bloodline. Owners are supported by the professional Riviera and Belize worldwide representative and service network.







New sense of space, luxury and comfort

Now Belize has taken the concept of a semi-custom motor yacht to a new level with the Belize 66, a vessel that delivers a new sense of space, comfort and luxury and offers an unmatched level of customisation and bespoke elements.

Available in Sedan or Daybridge models, the Belize 66 offers three or four cabins with a large space between the midship master stateroom and the engine room that can be optioned for a wide range of purposes.

Power is delivered for this new motor yacht by Volvo Penta IPS.

"We have been able to include more of everything a client could want in the 66 than any equivalent boat in the world," said Mr Moxey.

With a wide range of options already built into the boat's design, each owner is assured of selecting an individual configuration that will perfectly match their boating and personal lifestyles.

The range of options begins with the overall layout. Clients may select a single-level lifestyle Sedan or a Daybridge with classic hardtop. The hardtop includes a retractable 3x3m electric canvas awning sunroof.

Luxury and practicality

From the moment of arrival on board - via side bulwark doors or the transom gates - the Belize 66 speaks of luxury and Australian practicality at every level.

The teak-laid swim platform is built in two sections. Two thirds of the platform is fully submersible to assist in tender launch and retrieval while a smaller section remains fixed. The garage under the cockpit has space for a Brig 330 or Palm Beach tender.

Step up through the transom gates to the teak-laid cockpit. The starboard fore quarter features a dinette and L-shape seating while owners may choose where to place the two-plate barbecue unit with its drawer fridge and ice maker; across the transom with a lounge at the port fore quarter - or vice versa. A third option for Daybridge owners is to locate the barbecue on the bridge.

A watertight hatch under the cockpit lounge provides access to the engine room or, when the space between the full head-height engine room and the master stateroom is configured as a utility room or crew quarters, into this space.

When the Belize 66 is at anchor, sun-lovers will gravitate to the foredeck via wide high bulwark side decks. This massive sundeck offers a large sunken U-shape lounge and a central dinette table that can be lowered to create - with an infill - a massive day bed. Lounge backrests are stored in lockers on either side and an insulated cold locker for drinks is forward. The entire area can be sheltered from the sun by a fold-up canopy.

Owners selecting the Daybridge layout have the hardtop that covers the helm and forward lounges providing cover for almost the entire space.

The Daybridge model includes a staircase leading up from the saloon and opening to a space designed with helm seats forward behind a wide dashboard and sports wheel. Twin companion chairs are on the starboard side along with viewing lounge and, further aft, a U-shaped lounge surrounding a timber dinette. Outdoor chefs may select the option of the barbecue on this deck. Situated on the port side, opposite the dinette, it offers a generous food preparation space, large barbecue and a sink with fridge and plenty of storage under. There is even more storage available aft of the dinette.

Sun lounges occupy the aft section of the Daybridge.

Back in the cockpit, the saloon bulkhead is all stainless steel and ship-like, with a large awning window linking this outdoor space with the galley while a sliding glass door provides entry to the saloon.

Spacious interior

Stepping inside to the massive saloon area, a large and efficient U-shape galley with stone benchtop lies to starboard with induction cooktop, convection microwave, fridges, freezers and a pantry opposite.

Moving forward and one step up from the galley is the dinette to starboard with a free-standing lounge or armchair opposite. The chair can be moved across the space to add to dinette seating. Owners will personalise this entire space with a select choice of fabrics and bespoke finishes.

A pantograph door opposite the dinette provides immediate access to the port deck.

The lower helm area will reflect the owner's life and boating style. In the Daybridge model, those who love open air cruising will probably select the optional minimalist helm layout, opting for a large L-shape lounge and coffee table on the port side and a single-seat helm to starboard for those days when the weather dictates under-cover control. For Sedan owners and those boating in cool climates, a more expansive helm is offered featuring a central leather helm chair facing a sports wheel and expansive dashboard with comprehensive navigation systems and controls. Guests are accommodated with a companion seat on the starboard side and a second companion seat to port.

A massive curved glass windscreen wraps around the helm with a large 2 metre wide centre panel.

A staircase forward of the helm leads to the accommodation companionway, complete with timber-panelled walls and fine fabrics. Here, owners will further reflect their boating lifestyle; family living, entertaining or couple cruising, perhaps, in three or four cabins with the option of additional crew quarters.

The four-cabin Classic configuration includes the Master Stateroom amidships with a bathroom on the starboard side, large twin wardrobes and an entertainment unit built into the forward bulkhead.

An additional Classic layout option offers full-beam master stateroom amidships, a full beam ensuite bathroom aft that includes a large shower stall with seat to port and a large linen cupboard in the starboard aft quarter.

A Presidential design is available with a number of optional layouts for the utility or crew cabin space. In the Presidential design, the ensuite bathroom is located forward on the starboard side.

The three-cabin Grand Presidential option provides a full-beam master stateroom amidships and a bathroom aft of the master that offers twin vanities. The Stateroom is fitted with large twin wardrobes. This configuration also offers a large office space in the starboard fore quarter of the suite in lieu of the fourth bunk cabin.

As well as a bathroom option in the space aft of the master stateroom, owners may select a wide range of fitouts. It could be a utility room where dive gear and other watersport equipment can be stowed or a workshop or even a crew cabin with either a single bunk or fixed single and pullman-style bunk over. Another option for this space is a massive walk-in wardrobe.

A VIP guest stateroom forward includes a queen size walk-around double bed, twin wardrobes and en-suite bathroom. A cabin on the port side is equipped with twin beds. An ensuite bathroom to this cabin also serves as a day head or a share with the Classic four-cabin option. The fourth cabin provides two bunks. A stacked clothes washer and dryer are concealed in a companionway cabinet forward of the bunk cabin.

All cabins are fully carpeted. Wardrobes and storage lockers are cedar-lined.

Power for the new Belize 66 comes from the proven Volvo Penta IPS3 pod drive system, delivering outstanding performance, whisper-quiet ride and industry-leading fuel efficiency. It includes Volvo Penta's Station Hold joystick steering and joystick control for fingertip manoeuvrability.





Designed after owner feedback

Mr Moxey said he and designer Stephen Ford worked for two years on concepts before extensive consultation with current Belize 54 owners.

All of the design concepts were developed utilising the very latest version of Unigraphics 3-D computer-aided design (CAD) software, exactly the same systems as used by Formula 1 motor racing teams around the world. The software models Stephen Ford and the design team developed allowed them to provide a virtual walk-through tour of the proposed motor yacht.

"The development of Belize motor yachts has always been driven by discerning and highly knowledgeable owners who know exactly what they need to make their boating experience perfect," said Mr Moxey.

"We showed these valued owners our ideas, listened closely to their input and then incorporated their ideas and wishes and returned with refined concepts.

"Our owners offered a diverse range of requests and requirements and we have been able to incorporate virtually every one of those into the final design.

"A key demand was a motor yacht large enough to fulfil all the requirements of long-range cruising and live-aboard luxury while maintaining the flexibility for a couple to handle the motor yacht without crew.

"The fact that we can deliver a 66-foot luxury motor yacht that fulfils that demand is a combination of 21st century technology and a very considered design."

After the extensive consultation process which spanned more than a year, Ford and the design team began the final 3-D modelling.

"The motor yacht would have to include a myriad of tightly packaged elements, yet every component must be easily accessible," Ford explained.

"The owners involved in the extensive consultation are delighted with the result. They can see their personal DNA in the final motor yacht designs.

"We have layouts of the Belize 66 with individuals' names on them.

Ford said the team has developed a total of nine layout options for the Belize 66 from a single structure.

"The versatility and custom capabilities of this motor yacht are extraordinary," he said.

As well as developing concepts and walk-through virtual tours, Ford and the design team utilise the Unigraphics design software to develop every element of the Belize, down to the smallest components.

The hull of the new Belize 66 is a development of the original Belize 54 hull, with all of the ride and seakeeping qualities so well loved by Belize owners.

With designs completed, the team despatched the computer files to three different five-axis routing machines, each working in parallel to create the plugs for all components.

World Premiere 2018

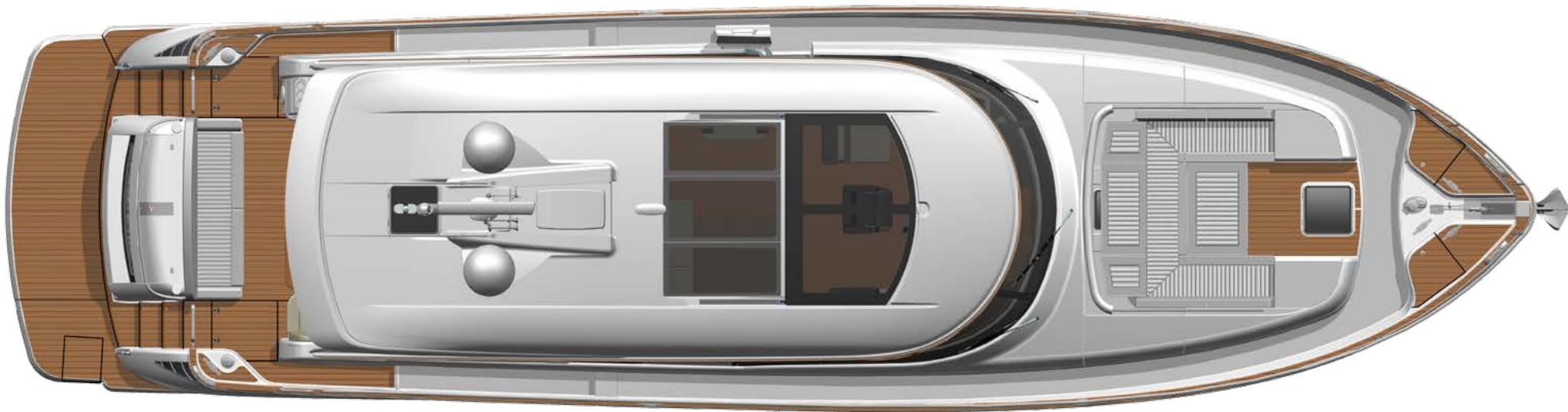
The Belize 66 is nearing completion, with the first boat - a Sedan - scheduled for her world premiere at Fort Lauderdale International Boat Show 2018.

Riviera's Motor Yacht Specialist in charge of overseeing the build, Doug Nelson, said the team were exhilarated with the Belize 66 as she begins her final fitout stage.

"The creation of the new Belize 66 is a total commitment for our team," said Mr Nelson. "This is utilising all the resources of the dedicated Belize team while maintaining the current Belize 54 production orders and we are now looking forward to October 2018 and the opportunity to showcase our new 66 to the world.

"The versatility and custom capabilities of this motor yacht are extraordinary..."

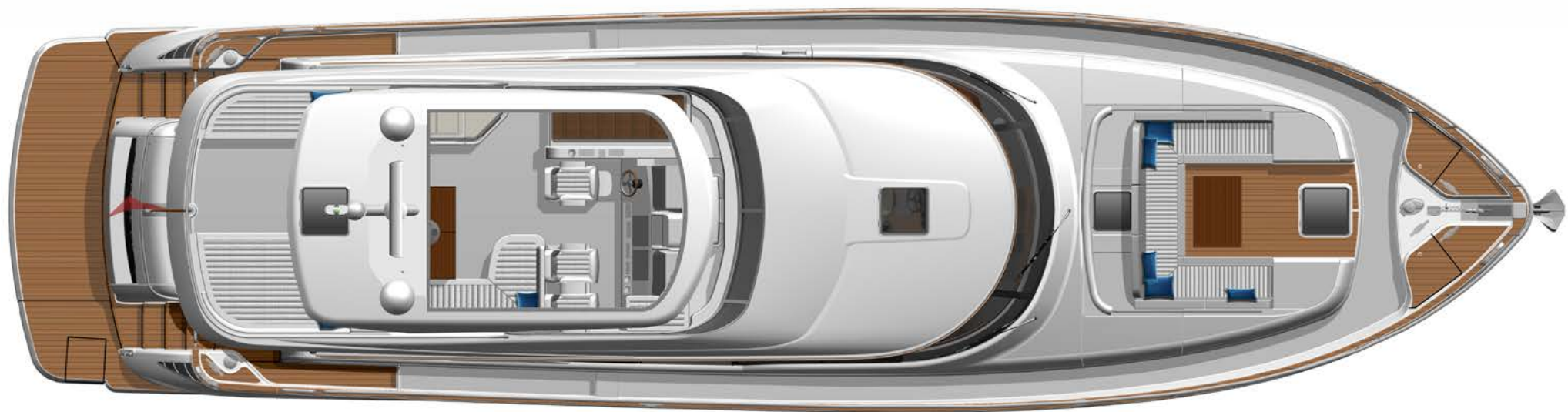




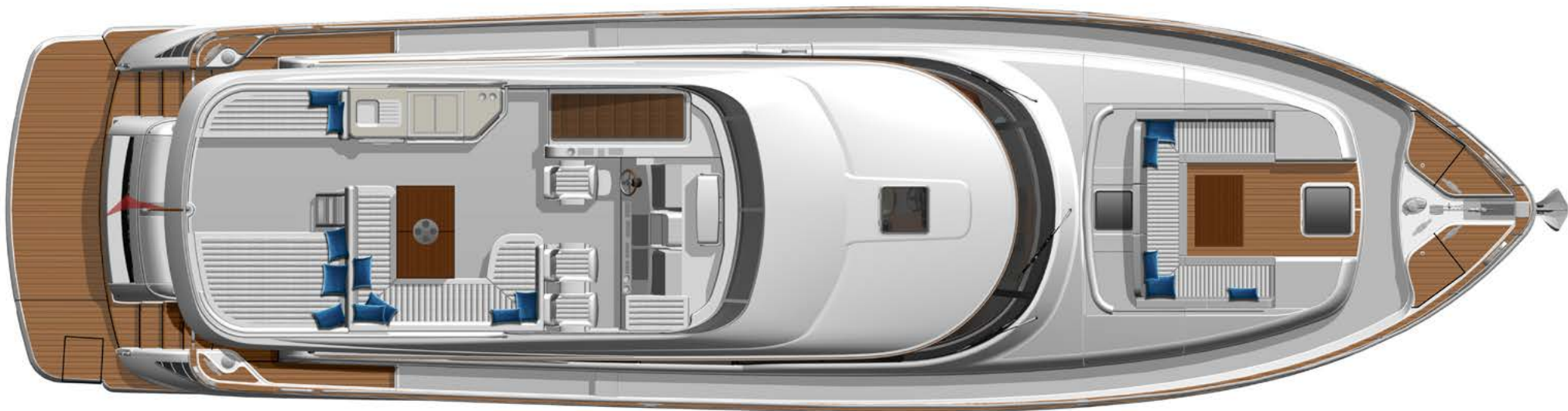
Sedan overview



Sedan main deck



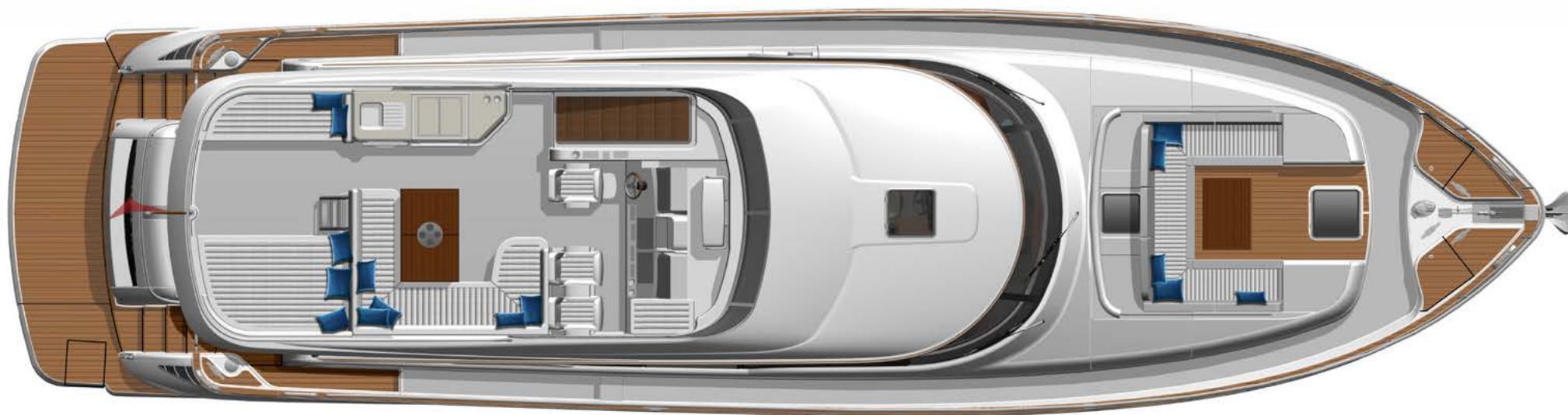
Daybridge overview



Daybridge deck



Daybridge main deck master helm



Daybridge deck



Daybridge continental main deck



Daybridge continental main deck with dining



Classic 4 stateroom with utility room



Classic 4 stateroom with aft crew



Classic 4 stateroom with walk-in robe



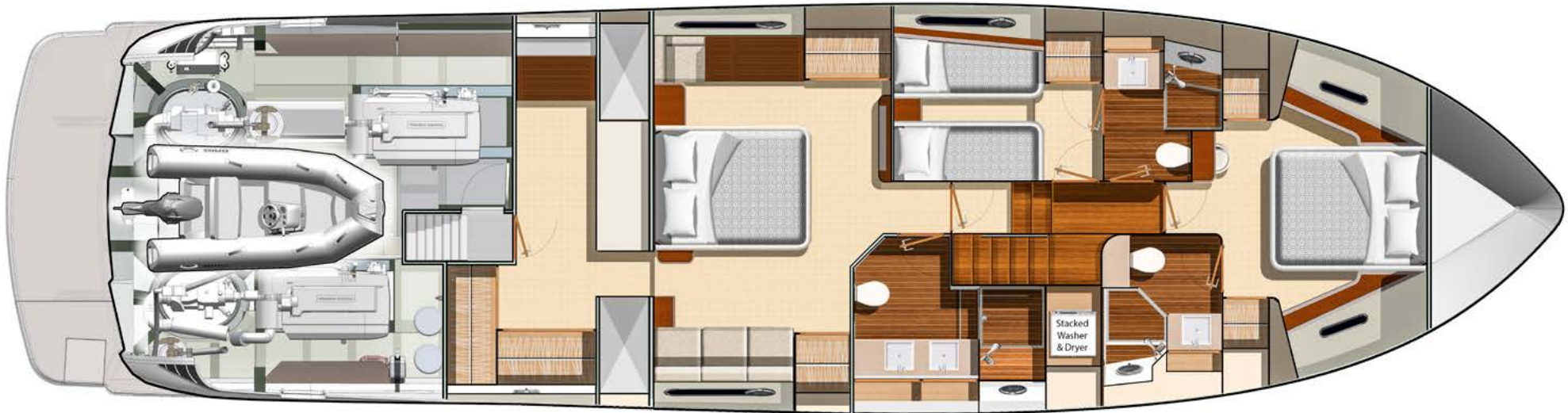
Classic 4 stateroom with full beam ensuite



Presidential 3 stateroom with utility room



Presidential 3 stateroom with aft crew



Presidential 3 stateroom with walk-in robe



Grand Presidential 3 stateroom with full beam ensuite

Preliminary Specifications

Length Overall <small>(inc. swim platform and bow roller)</small>	20.70 m	67' 5"
Lenght at waterline	18.2 m	59' 8"
Beam	5.4 m	17' 9"
Maximum Draft	1.5 m	4' 11"
Fuel Capacity ***	4,500 L	1188 US gal
Water Capacity *** <small>(Water maker standard)</small>	700 L	185 US gal
Holding Tank Capacity ***	500 L	132 US gal
Sleeping Capacity	3-5 cabins 6-10 persons	
Standard Engines		
Volvo Penta IPS3 1350 x 2	746 kW	1,000 hp each
Generator Onan	29 kW	

*Specifications may vary on a regional basis.

Specification clarification

* Length of the hull (Lh) to ISO8666: Includes all structural and integral parts (ie. the moulded length of the hull). It excludes parts that can be removed in a non-destructive manner without affecting the structural integrity of the craft, (eg. pulpits, outdrives, driving platforms, rubbing strakes).

** Dry weight represents the estimated minimum weight of a yacht with standard engines and options, no fuel or water on board, no equipment or provisions and no personnel. The stated dry weight may be exceeded.

*** Denotes net tank capacity. For useable capacity do not rely on more than 90% of tank capacity. Actual capacity will vary according to yacht trim and sea state. Speeds are subject to normal weather conditions, fuel and/or water levels, passengers and equipment loads.

Our care for your information

Due to the constant refinement of specifications and design by Riviera Australia, the information in this document may change without notice.

Specifications may vary with time and by region.

Some images or illustrations in this brochure may include options or custom details.

Please note that as safety equipment specifications or standards vary by country, this aspect of your purchase will need to be completed by yourself and or your Riviera representative.

Please refer to your Riviera representative for specific warranty cover and the latest detailed list of inclusions and options prior to purchase.