



RIVIERA
LUXURY MOTOR YACHTS

 **BELIZE**



Refreshingly different, reassuringly Riviera

Riviera Flybridge Collection - first class all the way

In business the view from the top has many perspectives: uplifting, time constraining, always challenging. Come on, you've earned a break.

Another view from the top awaits. And it is calling you now. This is a world filled only with happiness and success: family and friends, luxury and renewal, unforgettable memories and joy.

At the helm of your magnificent new Riviera Flybridge luxury motor yacht, you oversee a world of unsurpassed beauty and grace, where life glistens and shines.

Any of the yachts from the Riviera Flybridge Collection, the 52 or 57 Enclosed Flybridges or the 43 or 45 Open Flybridges, can effortlessly fly you and your loved ones here.

You will be traveling in sublime blue-water style. With world renowned craftsmanship and quality, space, light, luxury, breathtaking accommodation and thoughtful inclusions at every turn. All underpinned by superior strength and build, astonishing stability and spirited performance.

Welcome aboard the world renowned Riviera Flybridge Collection. What a way to fly.



Riviera Owner - Rodney Longhurst







Riviera 43 Open Flybridge: refreshingly different, reassuringly Riviera

Though descended from yachts designed to fish for a living, and evolving into yachts to fish for fun, the modern flybridge yacht has come to serve many purposes. And like us all, needs to live up to many demands.

Because Riviera thoroughly researches and carefully listens to the way owners use their yachts, we're always fine-tuning our concepts and designs.

Today those demands and wishes centre upon the regrets of the time-poor, the desire for more family interaction, the vital re-valuation of friends and the sensible siren song of the work-life balance.

Hence, the 43 Open Flybridge from Riviera is a multi-tasking vessel that will help you fully enjoy the luxury life afloat.

The same, but very different

The 43 Open Flybridge is designed for both serious fishing ... and for serious fun.

The unencumbered styling conceals a host of smart features that serve to make life in the 43's cockpit as practical and enjoyable as possible.

This is, indeed, a spacious and enjoyable playground for you and your friends, with volumes of storage to keep everything you need right at hand when required.

Fishing enthusiasts will be pleased to know that the floor is reinforced with an alloy plate for a game chair and, in addition, a live bait tank can be built into the transom.

For the alfresco chef, an optional gourmet barbecue centre with interchangeable grill and sizzling plates can also be located aft, incorporating a sink, rubbish bin and storage for cooking utensils.

As you can see, the 43 Open has been carefully designed for versatility ... just the way our global family of Riviera owners like it.









Safely forward

Wide side decks,, high stainless steel side rails as well as convenient hand rails provide safe and confident passage to the forward deck for your crew, children and pets.

The anchoring equipment is stored neatly in her bow lockers – conveniently out of sight but right there when you need it.

Here is a space for serious sunning or perhaps quiet contemplation, with an optional lavish sun pad to enhance your sense of space and freedom.

If you require, an optional davit can be placed on the forward deck to assist with lifting and storing your tender.

Dining delights

Instead of dividing the space into a number of small, less-connected areas, we've brought them all together into a unified, flowing, single-level lifestyle space that runs, unimpeded, from swim platform to windscreen.

This makes enormous sense. Today's luxury motor yacht usage isn't the least bit compartmentalised.

You don't prepare a meal, all go to the galley; eat a meal, all sit together in the dinette; TV time, all go to the lounge area; nor, come fishing or barbeque time, all head out to the cockpit.

In the real world, many (or all) of these activities can be happening at the same time, and do – often in glorious chaos of many guests.

Practical and purposeful

If there's one question that characterises Riviera it is: "How can we make your boating more enjoyable?"

The answer is richly expressed in the 43 Open Flybridge saloon, where you'll feel right at home.

Large forward and opening side windows capture natural light and fresh air and an opening aft awning window, set in a strong, stainless steel frame, opens out to the cockpit.

The free-flowing feel from the windscreen through to the swim platform is evident as you relax in the large leather-upholstered U-shaped lounge, or entertain your family and friends for dinner around the saloon table, which can be converted into a coffee table or, optionally, an additional berth.

Overhead, the saloon headlining is padded and finished in leatherette, and a highly polished stainless, recessed elliptical handrail is recessed and runs through the centre for added passenger stability.

The 43's LED TV folds up from the starboard-side dash – conveniently keeping it out of the way when not in use but ensuring it can be easily accessed when required.

The TV is integrated with an audio/DVD entertainment system with iPod interface and subwoofer, also cleverly stored out of sight.









State of luxury staterooms

The 43 Open's master stateroom is located forward and is a luxurious space to rest and revitalise.

There are numerous pleasing little touches, such as the deep plush carpet, mirrors, reflective mood lighting and the positive-locking hardware on the cabinetry.

The queen-sized bed has a premium innerspring mattress that will assist your slumber and, underneath, we have designed-in volumes of storage to keep the room clean, uncluttered and comfortable.

As you might expect, the 43 Open's master ensuite also features our premium styling.

It is this relentless obsession with detail, with quality, with good design, with making your boating experience the best it possibly can be.

Spoil your guests

The 43 Open Flybridge's versatility extends to the full-beam guest stateroom aft, which can sleep up to three adults in absolute comfort.

Full-sized single beds with storage underneath can slide across to form an island, queen-sized bed if preferred, and there's an additional single bed to starboard.

Fresh air fills the stateroom through opening portholes with alarms that will sound if they are left open when the ignition is engaged.

Of course, the premium-finish philosophy also applies to the VIP guest ensuite, which doubles as the dayhead.

A clever two-way door creates privacy for guests, who will be impressed by the consistency of Riviera's exacting eye for detail and luxurious appointments throughout.

An additional overhead deck hatch, also with Oceanair block-out screen, has a dual purpose of allowing extra fresh air and light below.





A flybridge to look up to

The Riviera 43 Open Flybridge incorporates great function and style within a supremely comfortable, sea-kindly hull.

She is a striking and very popular example of Riviera's thoroughly modern approach to flybridge motor yacht design.

Her expansive open flybridge space is accessible from the cockpit via the Riviera design 'stair-ladder' which features teak treads for the safety of you and your crew.

Forward of the modern helm is a wrap-around lounge and table where you can relax while enjoying a healthy and hearty breakfast, or raise a toast to life as the sun slowly sets.

If you prefer to simply admire the sweeping 360-degree vision whilst listening to your own personal soundtrack, the Riviera 43's flybridge also sports an AM/FM stereo, CD/DVD player with iPod interface.



Please, take command

A raft of proven, ultramodern technology makes the 43 Open Flybridge incredibly easy to skipper.

The benefits of Volvo Penta's Inboard Propulsion System (IPS) extend to joystick manoeuvrability which enables a skipper, either solo or with a novice crew, to simply push and twist the joystick and make the yacht respond immediately, pivoting in place or tracking sideways into a berth.

The aft helm is ergonomically designed, with two premium helm chairs ensuring the comfort of both the skipper and their companion whilst underway.





Engineering excellence

The clean and uncluttered engine room – with acoustic and thermal insulation and LED lighting – highlights the skilled consideration for which Riviera is renowned globally in terms of engineering.

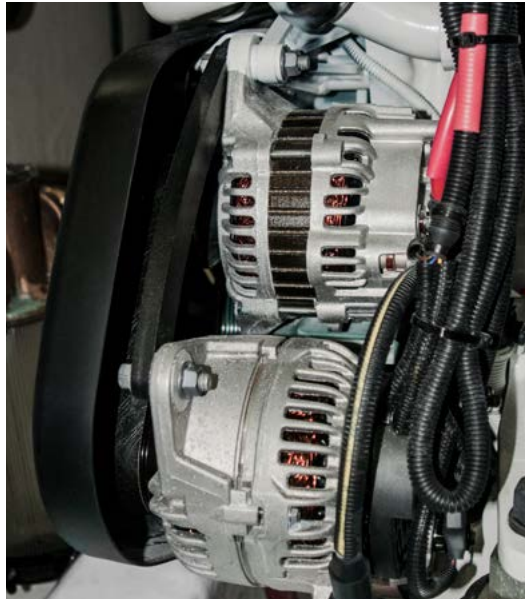
The impressive commercial air intake system helps keep the engine room temperature well below the manufacturer's formal recommendation, reducing fuel consumption even further, while the air-conditioning units feed condensation water into the common drain lines located on either side of the yacht, and which drain aft and overboard.

All onboard drains also feed into these common drain lines, while an advanced mist elimination system with veins draws moisture from the air and feed directly overboard.

Two automatic bilge pumps with manual override are located at various points throughout the hull and also pump directly overboard.

There's even a dedicated space for a gyroscopic stabiliser on the centreline of the yacht – yet another example of how Riviera is embracing all innovations that make boating more enjoyable.





Electrical excellence

All batteries onboard the 43 Open Flybridge are maintenance-free to ensure carefree boating and are housed in special battery boxes in accordance with the American Boating & Yacht Council (ABYC) and European Union's CE industry standards.

The house power is 24-volt, which allows for simpler charging, lower current draw and smaller cables (further reduced weight) than equivalent 12-volt systems. The Mastervolt/Marinco AC/DC inverter provides power to the ice-maker and entertainment systems, ensuring watching television while relaxing quietly at anchor is whisper-quiet.

LED lighting is utilised throughout the yacht and provides trouble-free boating while reducing electrical current draw. The lamps use less than 10 per cent of the power required to run a halogen lamp – no bulbs means no maintenance and long service life. Additionally, Residual Circuit Interrupter (RCD/GFCI) provides protection over the entire yacht and also complies with ABYC and CE standards for safer boating.



The power and technology are yours

Riviera is at the forefront of a marine propulsion revolution, having now launched hundreds of pod-driven luxury motor yachts.

Pods are used on such worldly form vessels as the Queen Mary II cruise ship as well as large-scale commercial craft. This proven technology is now available for pleasure yachts.

Pod drives offer an excellent power-to-weight ratio delivering improved performance, enhanced torque, improved fuel efficiency, simple maneuverability, reduced environmental impact and quiet operation thanks to under-water exhausts.

In simplified terms, Volvo Penta's innovative Inboard Propulsion System (IPS) features twin pod drive units, each of which is capable of turning independently to provide the correct thrust to move the yacht in the exact direction required by the skipper easily controlling the system with either a steering wheel and throttles or a joystick.

The 43 Open Flybridge has a joystick at the helm and an optional joystick in her cockpit.

IPS also offers a Dynamic Positioning System (DPS) for station-holding while preparing lines and fenders or while waiting off a fuel jetty, the convenience of Auto Pilot, manual trimming with optional auto-trim, as well as a highly-efficient Anti-Corrosion Protection (ACP) unit mounted to the transom to reduce the maintenance of sacrificial anodes.

The three-blade nibral, forward-facing, counter-rotating propellers are protected by the premium anti-foul coating Prospeed to achieve a long service life, as well as 316 marine-grade stainless steel line-cutters from Volvo Penta, located between the propellers for protection from fishing lines, plastic bags or nets. These precision-made line cutters create a very efficient



rotating cutting action to protect the propellers and shaft sealing without increasing drag or fuel burn.

The 43 Open Flybridge employs the revolutionary Volvo Penta D6-IPS600 propulsion system with twin D6 engines and IPS10 pod-drives (2x) 320kW/435hp) as the standard package. This is a perfectly matched drive package for the 43 and the system's Class 5 commercial rating assures reliability and durability.

Additionally, the IPS package is fully certified under the Det Norske Veritas and Germanischer Lloyd (DNV GL) classification system.



Window to the future

Volvo Penta's state-of-the-art Glass Cockpit navigation and monitoring system blends new technology with dependability and practical functionality and can be fully optioned to the 43 Open Flybridge.

The Glass Cockpit system provides a very clean, easy-to-use system with enhanced overview and control of both engines and navigation, including GPS, sounder and radar, even auto pilot and optional charts ... and all in one place and in the one system.

Integrated with the IPS Electronic Vessel Control (EVC) system, the Glass Cockpit gathers all driver information and displays it in one location. The easy-to-handle, pinch-to-zoom displays give you instant data and control. The ergonomic design and interface for the dashboard offers push buttons on the controls and touch-buttons on the screens.

Just one clever feature of the Glass Cockpit is the unique auto guidance feature that – based on the yacht's draft and your desired safety distance to obstacles – searches through all relevant charts to create a route you can follow – and avoid shallow water, buoys and other obstacles. Coupled with the auto pilot, it not only shows the way, it can take you there.

The Glass Cockpit also enables the option of full joystick steering whilst underway.



The Riviera advantage

Riviera is continuing to lead the luxury motor yacht market and proudly stands behind the easy-to-use systems onboard its world-class designs.

A 5-year limited warranty on all Volvo Penta systems is now standard with every new Riviera and covers Volvo Penta helm stations, steering and propellers as well as major componentry of their high performance drivelines and fuel-efficient engines.

Available worldwide, this extended warranty complements the Riviera 5-year limited structural warranty and will provide even greater peace of mind for our valued Riviera boating family members.

Riviera Family members enjoy exclusive invitations to fun-filled social and boating education events, inspiring cruising experiences as well as special offers on genuine parts, electronics and our premium Riviera lifestyle collection.



CZone simplicity

The fully integrated CZone digital switching system enhances the ease of monitoring and operation of the Riviera 43's onboard systems, including tanks, and extends centralised touch-screen control to lighting, pumps, batteries, entertainment systems and appliances.

CZone allows owners to operate multiple circuits at a single touch, energizing all lighting and electrics depending on your requirements. It comes pre-programmed with three modes – 'entertaining', 'cruising' and 'dock unattended' – and these modes can be customised by the owner so the system works exactly how you want.

Other user-friendly features include interior light-dimming, timer controls, automated circuit control, wiper speed and wash functions. There's also a 'service' mode that shuts down all power and systems.

Based on industry-proven Controller Area Network (CAN) technology, the CZone system offers DC and AC switching and over-current protection. Full systems monitoring (with alarms) including AC voltage, current frequency and kilowatts, DC voltage, current and remaining battery capacity, along with fluid tank levels and indication for systems in operation, is clearly displayed on the 3.5-inch touch-screen at the helm and 3.5-inch screen at the saloon entrance.

There's also the option of additional iPod connectivity so you can control CZone from anywhere onboard your yacht.



Impeccable pedigree

The confident poise of the 43 Open Flybridge is just as evident offshore as it is at anchor – her solid and robust hull with keel is the evolution of our rich 38-year history of building almost 5300 world-class luxury motor yachts that are proven in the often-challenging Australian offshore conditions.

Every Riviera built at our world-class facility on Australia's Gold Coast combines superior-strength hand lay-ups with a water-tight collision bulkhead forward, and independent compartments throughout the hull.

Our legendary build quality also features vinylster resin in the outer layer of lamination to increase the ability to withstand water absorption. An isophthalic gelcoat exterior provides an impeccable and hard-wearing surface finish.

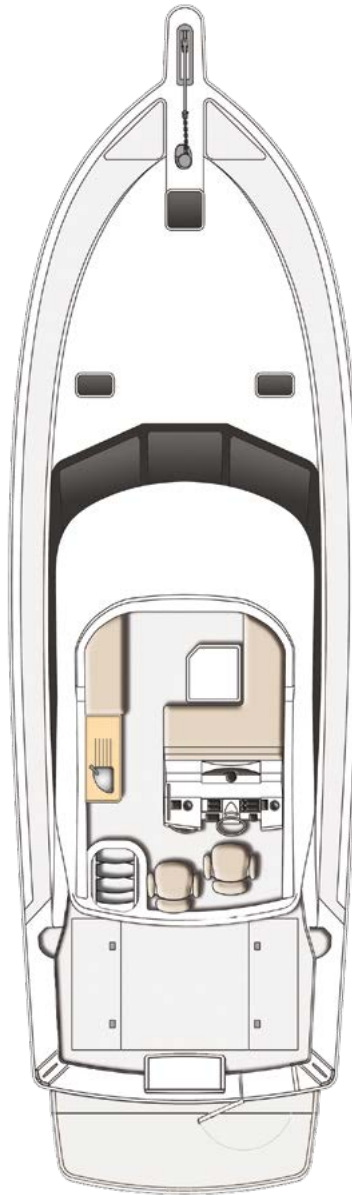
From the waterline down, the hull is solid GRP with reinforced bottom, keel and chines. Structural core material is used in the hull flanks, main deck and hardtop, while precisely fitted, lightweight resin transfer-moulded small parts have a double-sided gelcoat finish and are pre-fitted for a perfect seal when all the major components are bonded together.

Riviera uses only 316 marine-grade stainless steel in all our exterior fastenings. All stainless steel rails feature ground and polished welds to ensure a consistently smooth and mirror finish.

Our designers have also placed a firm focus on convenient access to key maintenance points throughout the yacht so any issues can be quickly identified and addressed, and service costs are kept to a minimum.

Of course, this thoughtful consideration for our Riviera family of owners is a key part of our ethos of doing all we can to help our valued owners achieve ... 'the ultimate boating experience'.

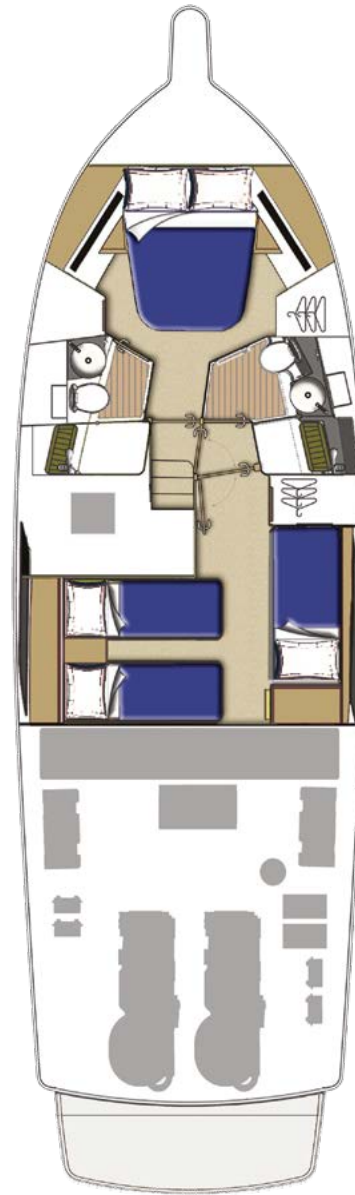
Riviera 43 Open Flybridge



Cockpit barbeque option



Lower helm option



Specifications

Length Overall <small>(inc. swim platform and bow sprit)</small>	14.46 m	47' 5"
Hull Length (Lh to ISO8666) *	13.61 m	44' 8"
Beam <small>(inc. gunwale)</small>	4.57 m	15' 0"
Maximum Draft <small>(inc. props)</small>	1.13 m	3' 8"
Dry Weight <small>(approx.)</small> **	14,200 kg	31,300 lb
Fuel Capacity ***	2,000 L	528 US gal
Water Capacity ***	460 L	122 US gal
Holding Tank Capacity ***	151 L	40 US gal
Sleeping Capacity	6 persons	
Cockpit Area	9.5 m ²	102.3 ft ²
Bridge Clearance	4.97 m	16' 4"
Standard Engine Volvo Penta D6-IPS600 x 2	320 kW	435 hp each

*Specifications may vary on a regional basis.

Specification clarification

* Length of the hull (Lh) to ISO8666: Includes all structural and integral parts (ie. the moulded length of the hull). It excludes parts that can be removed in a non-destructive manner without affecting the structural integrity of the craft, (eg. pulpits, outdrives, driving platforms, rubbing strakes).

** Dry weight represents the estimated minimum weight of a yacht with standard engines and options, no fuel or water on board, no equipment or provisions and no personnel. The stated dry weight may be exceeded.

*** Denotes net tank capacity. For useable capacity do not rely on more than 90% of tank capacity. Actual capacity will vary according to yacht trim and sea state. Speeds are subject to normal weather conditions, fuel and/or water levels, passengers and equipment loads.

Our care for your information

Due to the constant refinement of specifications and design by Riviera Australia, the information in this document may change without notice.

Specifications may vary with time and by region.

Some images or illustrations in this brochure may include options or custom details.

Please note that as safety equipment specifications or standards vary by country, this aspect of your purchase will need to be completed by yourself and or your Riviera representative.

Please refer to your Riviera representative for specific warranty cover and the latest detailed list of inclusions and options prior to purchase.

The Reassurance of owning a Riviera

What sets Riviera apart as one of the world's great luxury motor yacht builders?

Is it the devotion to quality, standard of materials used, the ocean-tested structural strength, unsurpassed ease of operation, or the stylish, handcrafted luxury finish? Or perhaps it's the famous culture of care that transforms owners into the 'Riviera family'.

The answer is all of the above, and more. Much, much more. Over 38 years and the building of over 5300 luxury motor yachts, the 585-strong Riviera team have been on a continuous quest of evolution and refinement.

This remarkable heritage of knowledge matched by innovation allows us to marry the best of the time proven with the exciting and new. Witness our introduction of cutting edge touch screen digital technology and joystick maneuverability, which make navigating and operating a Riviera and Belize luxury motor yacht a relaxed and enjoyable experience.

Located on the Gold Coast, Queensland, our 14-hectare, state-of-the-art manufacturing facility is the largest facility of its kind in the Southern Hemisphere. From here we build on the notable Australian qualities of strength, practicality and love of water in the continent completely surrounded by three oceans and four seas. Then we test our designs in some of the toughest offshore conditions on earth. Hardly surprising that Riviera luxury motor yachts command impressive resale values worldwide.

Today, you can choose from five individual designs that make up our fabulous collection of luxury motor yachts, the Riviera Flybridge, SUV, Sport Yacht or Sports Motor Yacht models, along with our more traditional Belize Collection. All will withstand virtually anything the elements and you can put them through, with poise and ease.

Naturally, we back this confidence with an industry-leading 5-year structural limited warranty. In addition, with all our Volvo Penta powered yachts, we offer a 5-year limited warranty covering helm station controls and multi-function displays, steering and propellers, plus pod drives and engines.

Life is too short for needless compromise. So when it comes time to invest in your next dream motor yacht, why settle for a lesser option when you can enjoy all that makes up a Riviera.



Crafted with pride, with you in mind

Owner Care at Riviera and Belize is in a class of its own. Premium quality, professional and personal, it is all designed to be of the highest quality, in keeping with the world-class luxury motor yacht we are building specifically for you.

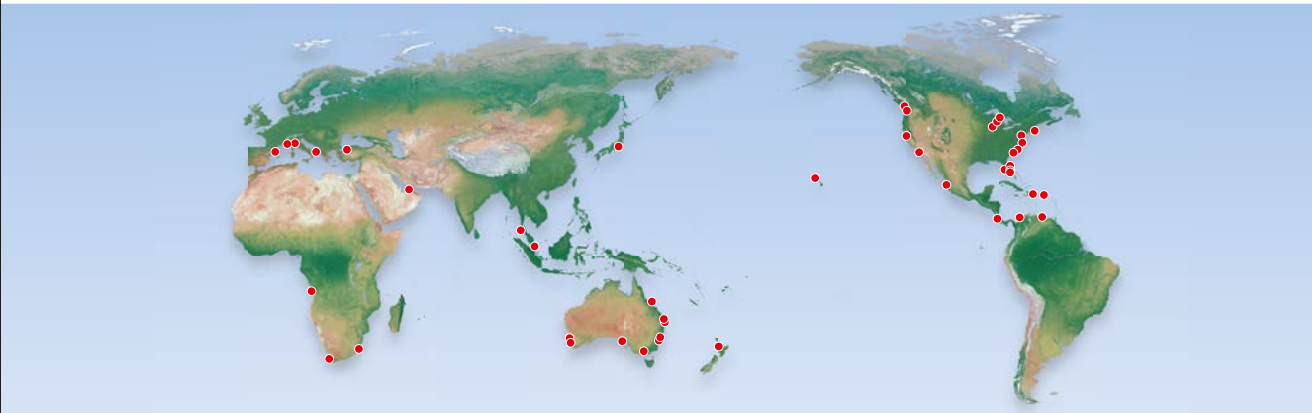
Like thousands of other happy owners, we are confident your every experience of dealing with us and our global representative team - from selecting your favoured options, electronics and decor, through to routine maintenance and repairs - will be conducted with the upmost respect and care.

Our highly skilled team consult and partner with internationally acclaimed naval architects, designers and engineers to ensure we fully embrace the latest, most exciting industry standards and trends.

Constant communication with the worldwide family of Riviera owners also plays a vital part in helping guide and inform our new model development program.

All this pride in performance ensures Riviera will continue to exceed the evolving needs of discerning luxury motor yacht enthusiasts like you.





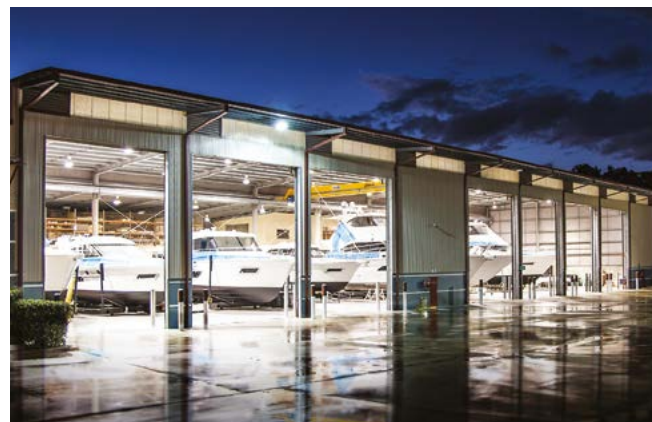
A global marque of excellence

For nearly four decades the Riviera team have been preoccupied with the relentless pursuit of excellence. That means never being satisfied with the status quo, rather forever looking to improve and refine our knowledge base by embracing the latest technologies and work practices.

All these endeavours by our factory team and international representative network are directed towards creating a superior luxury motor yacht experience for you. They have also garnered us enormous acclaim from the global boating industry along the way.

Over the years Riviera have accumulated an impressive collection of local, national and international awards recognising 'world's best practice' across the fields of education and training, employment, innovative manufacturing techniques, export, quality of workmanship and pioneering design.

More than testimony to our passion for handcrafting superior luxury motor yachts, they are your assurance of 'The Ultimate Boating Experience' when you decide to own a Riviera.



Electronics and systems

Electronics play an ever-increasing role in maximising the pleasure and safety of luxury motor yachts, and the choice of equipment that is available today is vast.

Selecting the equipment that meets your needs can be a very challenging task – and Riviera's electronics experts are here to assist.

We source the best systems from around the world, we help match technology to individual requirements and work closely with Riviera's international representative network to create systems that maximise your boating pleasure.



Riviera Genuine Parts and Accessories

Our passion for quality and practical design is reflected in our exclusive and growing range of clothing, accessories and décor items created to enhance your time afloat.

If you love your Riviera, you'll feel right at home with the Riviera Collection – an extensive range of casual, stylish, comfortable, practical equipment, clothing and accessories.

The Accessory and Décor collection ranges from storm jackets to stylish crockery.

To make your Riviera truly your own, we offer a wide range of fabrics, finishes and colour schemes that enable you to personalise your motor yacht.

Of course our experienced design team is always available to advise and assist you with your individual selection.

RivieraParts.com.au





The Riviera Experience

There's nothing quite like the exhilaration of blue-water cruising in company to remind our valued owners why they are so passionate about the rich and rewarding Riviera luxury life afloat.

For these are the types of passages that build the confidence and skills for people to use their yachts to their full potential, that create the very special memories that last a lifetime, and, importantly, are often the catalyst for long-lasting friendships.

Together, members of our growing global family of Riviera and Belize owners enjoy many special cruising experiences to idyllic destinations around the world – safe in the knowledge that experienced skippers and engineers are always close at hand.

We invite you to join with us for these special experiences – either to stretch your sea legs and gain offshore cruising confidence, or to simply enjoy the company of like-minded people who share an appreciation for the truly unique Riviera life.

The Evolution of Australia's Riviera - Since 1980



2019 - Belize 66 Daybridge



2018 - Belize 66 Sedan



2018 - 39 Sports Motor Yacht



2018 - 395 SUV



2018 - 72 Sports Motor Yacht



2017 - 68 Sports Motor Yacht



2016 - 4800 Sport Yacht



2014 - 515 SUV



2013 - 565 SUV



2013 - 63 Enclosed Flybridge



2013 - 63 Open Flybridge



2013 - 50 Enclosed Flybridge



2012 - 445 SUV



2012 - 75 Enclosed Flybridge



2009 - 70 Enclosed Flybridge



2009 - 5800 Sport Yacht



2009 - 43 Offshore Express



2009 - 3600 Sport Yacht SII



2008 - 61 Enclosed Flybridge SI



2008 - 56 Open Flybridge



2008 - 51 Enclosed Flybridge SII



2006 - 56 Enclosed Flybridge



2005 - M360 Sport Cruiser



2005 - 60 Enclosed Flybridge



2005 - 47 Enclosed Flybridge



2005 - 3600 Sport Yacht SI



2004 - M400 Sport Cruiser



2004 - 51 Open Flybridge



2001 - M430 Sport Cruiser



2001 - 37 Open Flybridge



2000 - 40 Open Flybridge



2000 - M3350 Open Flybridge



1999 - 3000 Offshore SII



1999 - M3850 Open Flybridge



1999 - 3000 Offshore SI



1996 - 39 Open Flybridge



1995 - 3300 Open Flybridge



1993 - 48 Enclosed Flybridge SI



1993 - 36 Open Flybridge Twin Cab



1992 - 48 Open Flybridge



1991 - 42 Open Flybridge



1991 - 39 Open Flybridge



1987 - 33 Open Flybridge



1987 - 27 Open Flybridge



1986 - 38 Open Flybridge MK II



1985 - 52 Open Flybridge



1985 - 46 Open Flybridge



1984 - 32 Open Flybridge



1983 - 34 Open Flybridge MK I



2016 - 575 SUV



2016 - 5400 Sport Yacht



2015 - 57 Enclosed Flybridge



2015 - 52 Enclosed Flybridge



2015 - 525 SUV



2015 - 77 Enclosed Flybridge



2014 - 6000 Sport Yacht



2012 - Belize 54 Daybridge



2011 - Belize 54 Sedan



2011 - 4400 Sport Yacht SII



2011 - 61 Enclosed Flybridge SII



2011 - 53 Enclosed Flybridge



2010 - 43 Open Flybridge



2009 - 5000 Sport Yacht



2008 - 48 Offshore Express



2008 - 4400 Sport Yacht



2008 - 38 Open Flybridge



2007 - M470 Sport Cruiser



2007 - 4700 Sport Yacht



2007 - 45 Open Flybridge



2007 - 41 Open Flybridge



2004 - 33 Open Flybridge



2003 - 58 Enclosed Flybridge



2003 - 47 Open Flybridge SII



2003 - 42 Open Flybridge



2002 - M370 Sport Cruiser



2002 - M290 Sport Cruiser



2002 - 47 Open Flybridge SI



1998 - 48 Enclosed Flybridge SII



1998 - 36 Open Flybridge Single Cab



1997 - 34 Open Flybridge



1997 - 4000 Offshore Enclosed



1997 - 4000 Offshore Open



1996 - 43 Open Flybridge



1996 - 40 Open Flybridge Aft Cab



1989 - 44 Diavalo



1989 - 27 Targa



1989 - 27 Hardtop



1989 - 33 Open Flybridge



1988 - 52 Enclosed Flybridge



1987 - 35 Open Flybridge



1987 - 34 Diavalo



1983 - 44 Open Flybridge



1982 - 30 Open Flybridge



1982 - 30 Sedan



1980 - 38 Open Flybridge MK I

