



**RIVIERA**  
LUXURY MOTOR YACHTS

 **BELIZE**



The flagship of the sporty and adventurous Riviera SUV Collection







## The Riviera SUV Collection: count on amazing adventures

Next time you seem certain to be swamped by the incoming tide at work - everything wanted yesterday, or the day before - take a moment to reflect on the larger picture.

There is a bigger world out there filled with wonder and adventure. Over 70% covered in water, and just waiting for you to discover it all.

What better excuse could you have to run with the outgoing tide and explore all the highlights of both hemispheres on board your brilliant new Riviera SUV adventure yacht.

Surrounded in luxury, totally relaxed and taking every opportunity to create unforgettable memories, your friends and loved ones will thank you forever.

The Riviera SUV Collection is made up of the 445 SUV, 525 SUV, 575 SUV and the sensational new 395 SUV model. They are a perfect meld of the high performance and wide open cockpit of the classic Riviera Flybridge Collection, and the luxurious single-level, alfresco entertaining style of the award winning Riviera Sport Yachts.

In other words, you will be at the helm of two fabulous motor yachts in one ... with twice as many excuses to turn your life into one great adventure after another. Enjoy!



*Riviera Owner - Rodney Longhurst*



## The flagship Riviera 575 SUV: Supreme Utility Vessel

At Riviera we love a grand adventure. Especially when we're in the company of our esteemed owners worldwide and together we're setting out to create a new high water mark for 'luxury boating and cruising versatility' - a craft worthy of earning the title 'flagship' of our pioneering and awarded SUV Collection.

Thousands of design hours later, we're proud to say our new SUV flagship is shipshape and ready for you to launch on many grand adventures of your own. The exhilarating Riviera 575 SUV is here.

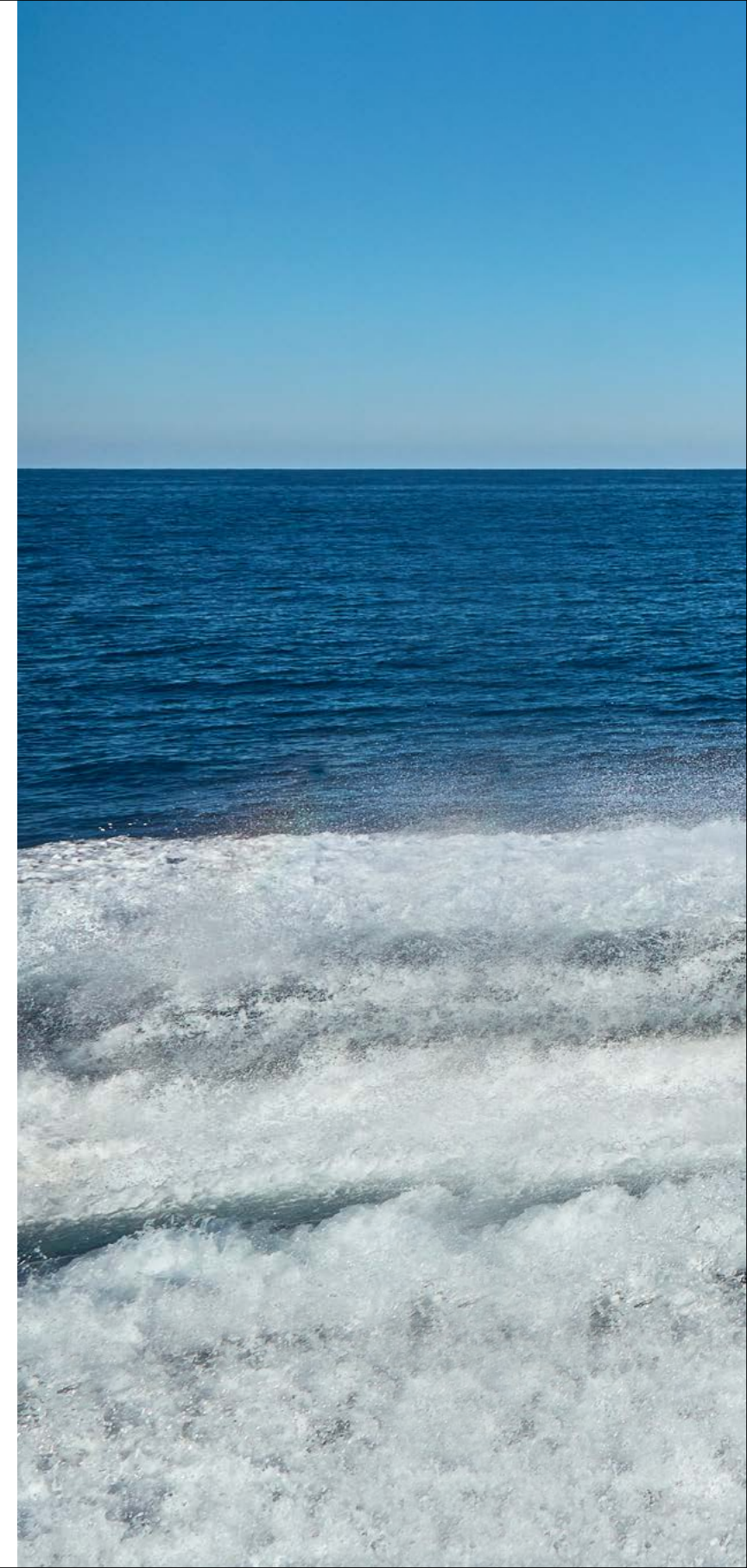
So, owners like you said you wanted a vessel made for living and entertaining on a larger scale, with generous cockpit and greater accommodation possibilities. Mission accomplished. A vessel as versatile in its outfitting and propulsion choices, as it is in its applications? Your Riviera 575 SUV comes with a saloon layout option and a choice of either conventional shaft-drive or innovative pod-drive propulsion.

Above and below decks, the Riviera 575 SUV offers flagship space, luxury, light and appointments plus something a little less tangible but perhaps more desirable still ... possibilities; boundless, uplifting possibilities.

Strike out for blue water to investigate some serious diving and angling. Steal away to that secluded anchorage just out of town to impress and entertain your VIP guests. Cruise with the dolphins, explore with the world's greatest adventurers, commune with nature and the stars.

All onboard will revel in the Riviera attention to detail, lovingly handcrafted touches, flowing design above decks and magnificent accommodation below. This is versatility on a grand scale: superior ultimate versatility.

When the entire blue water world is your oyster, picking the pearls is easy.















## Your every adventure launches here

Making your way to the marina, excitement builds. Will you be in adventurer or entertainer mode on this cruise? Actually, better pack both resort and sport wear ... the 575 SUV caters for both forms of luxury motor yachting with equal aplomb.

So, stepping onboard via the strong transom door you take it all in. No doubt, she is a triumph of practicality and design. You love the sporty fibreglass hardtop design feature, with its spectacular cockpit overhang and triangular, strata glass, side clears - offering shelter and shade. You applaud the timeless teak decking at your feet. And marvel at all that expansive, self-draining, immensely versatile space.

Riviera designers have given you the opportunity of creating a lifetime of happy memories. Out here you can entertain, converse, unwind, swim, dive or fish, all in flagship style.

## Cockpit and mezzanine: enjoy, enjoy

Feel like celebrating? Go ahead, turn up the volume with your separate zone, two speaker sound system.

Feel like unwinding? Retreat to the splendid comfort of the three-seater, L-shaped, hard wearing, contemporary lounge, located forward to port. Gathered around its integrated, craftsman teak table, you'll entertain and converse with views to die for. And when all that fresh air works wonders on appetites, look no further than to starboard...to the wet bar with its premium dual electric barbecue, ice maker, drawer style fridge and sink.

Time for lunch? Fortunately, you have several just caught snapper in the fish bin...

The Riviera 575 SUV is custom made for cruising, recreational and fishing aficionados alike. You can, for instance, fit a cockpit table, game chair or custom rod holders with ease. And the transom lounge can be shortened to accommodate diving and swimming gear storage, or even a live bait tank.

This is pure escape. Designed just the way you like it.

## Safety above all, for all onboard

Honoured guests, beloved children, sea going pets ... Riviera has worked hard to make everything onboard perfect. That includes championing safe and easy foredeck access. Nowhere is this more evident, or important, than ensuring safe passage in all weathers and conditions to the fabulous foredeck.

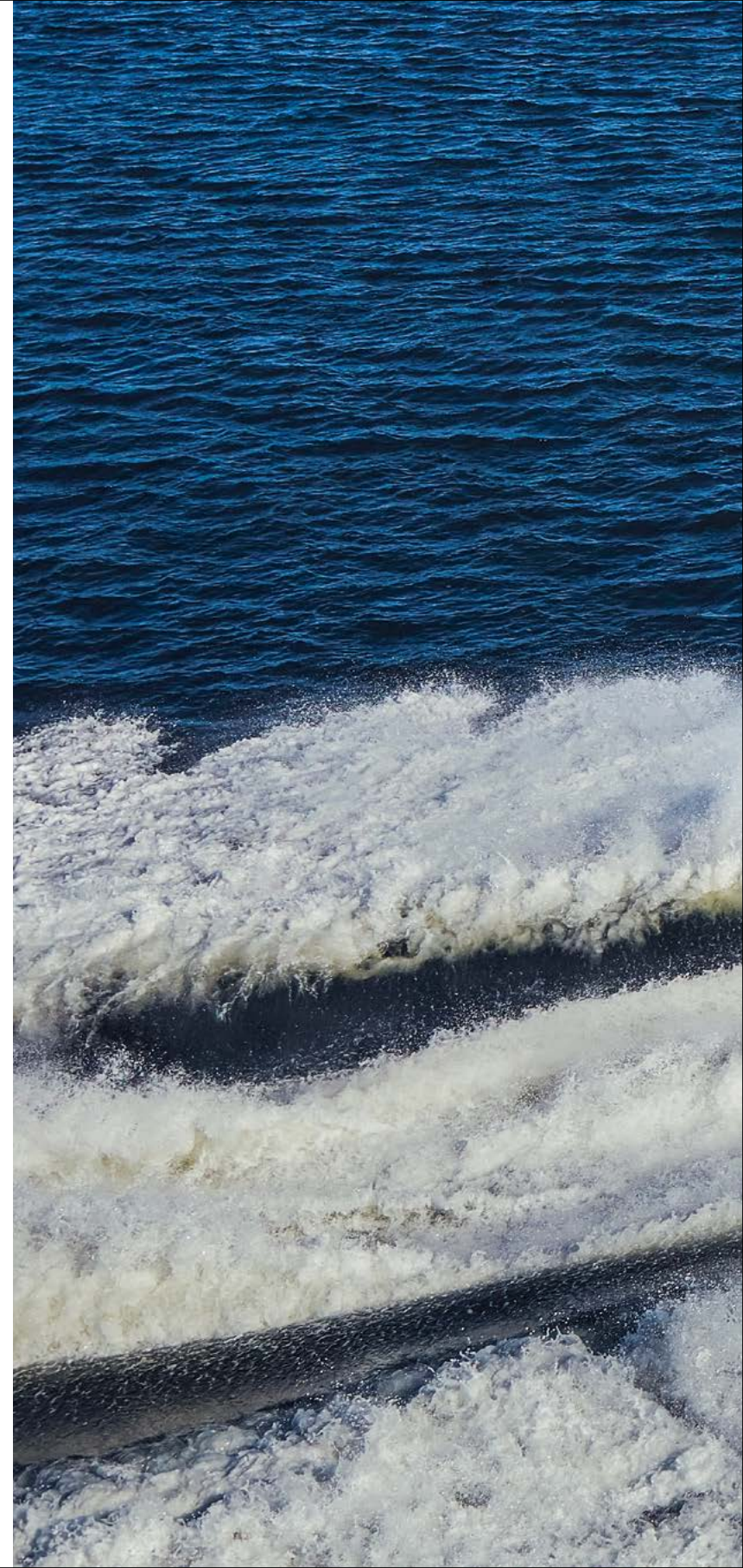
Thanks to skilful Riviera design, making your way here has never been easier. As befits a craft of this size, the wide walk around side decks have a no skid surface bounded by a high bow rail with mid safety wire. Easy.

Naturally, being Riviera, high practicality is melded with fine aesthetics. The bow rail is 316 marine grade stainless steel, as are all exterior fastenings like cleats and fender holders.

Practically speaking, you'll appreciate fresh and saltwater wash down facilities conveniently located at the anchor locker station, along with the remote operated winch. The foredeck's deep lockers similarly conceal a range of important equipment close at hand yet cleverly out of sight.

Above all of course, you'll love the perspective up here: Soothing. Uplifting. Privileged. Especially when you exercise your option to fit the double sun lounge. Water resistant, superbly soft and comfortable, it comes with stainless steel rails and protective cover.

Ah, this is the life, Riviera style.















## Simply superior, inside and out

Step up to the teak mezzanine steps now and look all around you. It's the ideal spot to appreciate Riviera's continuously flowing, alfresco design style in its full glory. From windscreen to transom, it links saloon, galley and cockpit in one seamless, luxurious whole - defining gracious, easy lifestyle and defying comparison.

Now slide closed the substantial tempered and tinted, glass saloon door. Encased in its gleaming, polished, 316 marine grade stainless steel frame, it exemplifies great utility, beauty and substance.

Now you are in the heart of your flagship 575 SUV. Glance around, it's all wonderful. Dancing with light and alive with thoughtful, handcrafted touches, for a moment you even forget you are onboard your flagship Riviera 575 SUV.

Instead, you have stepped into a grand design harbourside apartment. An apartment blessed with glorious, ever changing water views.

## The ultimate entertainer's galley

Location, location, location. A guiding principle of the real estate world, Riviera embraces it with a passion to design a galley like no other. The aft galley situated immediately to port: U-shaped and built for two, it is well appointed and nicely removed from passing traffic. That, at least, is the practical explanation.

Emotively speaking, the galley is something else again. It's the absolute beating onboard heart... Here, and only here, is it possible to spoil guests with gourmet delights, while feeding on jokes and conversation with all in the saloon, plus those out on the cockpit as well.

Simply slide open the bulkhead door, open the large awning window facing aft, and instantly you're in three places at once, saloon, cockpit and galley.

Equipment wise, you'll want for nothing: fine designer appliances (naturally, including dishwasher), striking, spacious, soft closing timber cabinetry, solid surface bench tops large enough to accommodate anything you want to dish up. And directly opposite to starboard ...more fridge and freezer drawers.

Food, friends, conversation, laughter ... life doesn't get any better.



## Pride of place in the saloon

No matter how brilliant your journey, wherever in the world it may be, life onboard the 575 SUV inevitably sees all gravitating towards the saloon...morning, noon and night. It exudes warmth and the most magical kind of attraction.

This haven is created by a spectacular combination of peerless design and build quality: panoramic views surround and inspire, made even more desirable by a level of appointments and craftsmanship you find only on a Riviera.

Here you are pampered, rested and supremely comfortable: totally at home in your light filled living room, overlooking some of the most alluring and natural locations on earth.

## Superb comforts, views, and you

Reverse cycle air conditioning to the saloon and galley ensures the right ambience is always maintained, regardless of season. Of course with all that glorious weather outside, you may wish to slide open the tempered and toughened side windows and fill the saloon with invigorating fresh air.

Settle into the U-shaped, strikingly contemporary lounge to port. No need to request a table with a view, that's a given. And the table itself - finest timber and highest polish on an enduring stainless steel pedestal - is as beautiful as it is practical.

After a lingering, long meal, a visit to the saloon's cocktail cabinet may appeal as you head towards the large, L-shaped, deeply cushioned lounge to starboard, to continue the conversation. Be warned though: a gorgeous sunset may leave you all lost for words...

And finally, to cap off another perfect day, simply press a button and your state-of-the-art entertainment system will emerge from its discrete storage compartment. With large, flatscreen LED TV fully integrated with Apple TV, Bluetooth, Airplay, Blu-Ray and sophisticated Bose sound system, let us entertain you.















## Total command at your fingertips

There has never been a more versatile luxury motor yacht. Nor one easier or more fulfilling to command. If you can drive a luxury contemporary car, have full confidence your flagship SUV is waiting for you to take command, even if you've never skippered before.

The secret is Riviera marrying the latest, cutting edge technology with an overriding design philosophy that every facet of life onboard should be wholly pleasurable.

So please, slip into the fully adjustable, Pompanette Platinum captain's chair with its matching companion chair (with an option of two further helm chairs to starboard). Reach out and wrap your hands around the classic, Le Mans-inspired steering wheel. It feels snug, right, a perfect fit, like the joystick to your immediate left - it gives you pinpoint maneuverability and control, even reversing into the tightest marina corners.

Now look out through the three massive, clear tempered glass windscreens - skipper, this is visibility on a grand scale. Next stop, the idyllic, blue water world!

Spiriting you there with exhilarating power is your choice of conventional shaft drive or innovative pod drive, courtesy of the revolutionary, smooth as silk, twin Volvo Penta Inboard propulsion System (IPS).

Either way, you'll have large multi-function display touch screens - easily controlled by an intuitive menu - and an astonishing degree of technical brilliance to guide you. At a glance you'll take in full vessel controls, engine system monitoring and all navigational aids. Easy. Pleasurable. Perfect.

**A** Optional starboard side helm seats



## Your masterful retreat

Ownership of a 575 SUV has many privileges, your magnificent master stateroom chief among them. So, you've had quite a day: sightseeing, snorkelling, fishing, conversing and entertaining, reconnecting with family, making new friendships and cementing old ones, what could possibly top that?

Well, try this...step down your own half turn, private staircase and into a kind of nirvana, a place of sanctuary, luxury and rejuvenation; welcome to your master suite.

Kick off your shoes and feel the soft, thick, plush pile carpet between your toes. Appropriately enough for a room luxuriating right across the full beam, your bed is king size with so much room either side it is more 'waltz around', than walk around. Naturally, the standard of appointments also befit royalty.

Think lovingly finished timber storage cabinets along both perimeters, touch button reverse cycle air conditioning, concealed LED mood and overhead lighting and your own deeply comfortable, always inviting sofa. Those are long sweeping hull windows on both sides with optional opening portholes, perfect to better experience the atmosphere of that exotic hideaway outside when you wake.

You will relish the sheer luxury of walking into your own cedar lined hanging wardrobe, complete with full length mirror and shoe racks. Revel in the quality and convenience of your own entertainment and home theatre centre. And most of all, take quiet pride and pleasure in those decades of hard work being rewarded in kind.

## A master designed ensuite

They say a picture is worth a thousand words, so please, take a long appreciative look at your master stateroom ensuite. Located to port it is a superb example of Riviera design principles in action: finest materials paired with inspired handcrafted touches and contemporary flair highlights.

The result is breathtaking and every bit as luxurious and welcoming as it appears. Premium quality mixer tapware, gleaming solid surface benchtops, above vanity bowl with LED lit mirror, frameless glass, self contained shower. Your ensuite features reverse cycle air conditioning shared with the master stateroom, and even its own opening porthole.

It's just another way, fine Riviera design serves your every need, beautifully.















## Only the best for your guests

Riviera 575 SUV owners love adventure, entertaining and good company. Fortunately, given the standard of accommodation below decks you will always have a wait list of family and friends eager to share your passions.

The forward VIP guest stateroom is truly 'VIP' - your guests are being spoilt, and they know it.

Thanks to smart Riviera design - and tinted, tempered glass, fixed hull windows with privacy blinds - natural light filters into the room creating a warm, calming effect. Twin hatches provide fresh air and more light should it be required.

Naturally, there is ample storage for any and all voyages: cedar-lined hanging lockers to both port and starboard, fine timber outboard storage cabinets, and even additional storage beneath the bed. And speaking of the bed, it is queen sized and walk around with good side access and a detailed feature headboard.

Here, honoured guests have reverse cycle air conditioning to cool and warm, flatscreen LED TV and home theatre system to entertain and a high degree of luxury all around to pamper.

Directly accessible to port is the guest ensuite - fresh from the pages of an international design journal it is both gorgeous and practical, also doubling as the day head.



## Always room for more

The Riviera 575 SUV is a generous craft in every way – generously proportioned and appointed, and invariably owned by generous people. So of course those late minute guests, the children or grandchildren can and will be accommodated in true Riviera style.

Welcome to your third stateroom located to starboard, where nothing has been overlooked, so everyone can be looked after.

There is plush pile carpet at your guests' feet, LED lighting overhead, the bunk beds are adult-sized with innerspring mattresses and even a make up bureau with mirror and drawers, as well the option of a LED TV/DVD with Bluetooth interface entertainment system.

Along with thoughtful touches like Riviera cabinetry, reverse cycle air conditioning and a fragrant, cedar-lined hanging locker with storage drawers beneath ... that unmistakable Riviera air of restful luxury makes for an escape in a class of its own.







## Engineering excellence

The flow coated engine room, with acoustic and thermal insulation and LED lighting, can be accessed through a hatch in the 575 SUV cockpit mezzanine floor which, even when open, maintains walk-through access to the saloon.

An advanced mist elimination system with veins draws moisture from the air and feeds directly overboard. All onboard drains including air conditioning compressors feed into the common drain lines located on either side of the yacht and drain aft. Four automatic bilge pumps with manual override are located at various points throughout the hull and pump directly overboard.

There's even plenty of space for a gyroscopic stabiliser down here – yet another example of how Riviera is ready to embrace all innovations that make boating even more enjoyable.

## Electrical excellence

All batteries aboard the Riviera 575 SUV's are maintenance free and are individually housed in special battery boxes in accordance with American Boating and Yacht Council (ABYC) standards, as well as the European Union's CE conformity mark, which incorporates the International Organisation for Standardization's ISO guidelines.

The 575 SUV includes six house batteries, self-monitoring Mastervolt charging system, plus dedicated engine alternators for each battery bank.

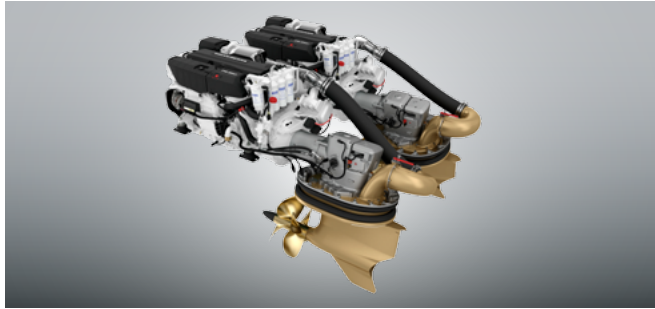
The house power is 24 volt which allows for simpler charging, lower current draw and smaller cables, providing reduced weight when compared to equivalent 12 volt systems.

The 575's Mastervolt AC-DC inverter (5kW 230V 50HZ/4kW 110V 60HZ) provides power to the icemaker, entertainment systems and all outlets onboard, ensuring watching television while relaxing quietly at anchor or in a marina is now whisper quiet.

LED lights also provide trouble free boating while reducing electrical current draw. The lamps use less than 10 per cent of the power required to run a bulb lamp – no bulbs means no maintenance and long service life.

Additionally, Residual Current Device/Ground Fault Circuit interrupter (RCD/GFCI) protection installed throughout the entire yacht complies with stringent international standards for safer boating.





## The power and technology are yours

The Riviera 575 SUV allows owners to select their personal preference of either pod-drive or conventional shaft-drive propulsion to suit their specific geographic regions.

There are four choices for a drive package for the 575:

### Pod drive options

Volvo Penta D11-IPS950 system with twin D11 engines and IPS20 pod-drives (2 x 533kW/727hp)

Volvo Penta D13-IPS1200 system with twin D13 engines and IPS30 pod-drives (2 x 662kW/900hp)

### Shaft drive options

Volvo Penta shaft-drive package with twin D13 engines (2 x 662kW/900hp)

- Includes twin lever controls, bow and stern thruster controls and Auto Pilot at the helm as well as Quickshift gearboxes that are fresh water cooled, as well as (3x) 17" Glass Bridge touch screens

CAT shaft-drive package with twin C12.9 engines (2 x 735kW/1000hp)

- Includes twin lever controls, bow thruster, Quickshift gearboxes that are fresh water cooled, (3x) 17" Garmin Mufti-Function Display screens and Auto Pilot.



## Window to the future

State of the art touch screen navigation systems very much confirm Riviera's commitment to enhancing your time aboard.

The blend of technology, dependability and easy to use functionality places the Riviera 575 SUV at the very forefront of world-class recreational motor yachts of this size.

Volvo Penta's Inboard Propulsion System (IPS) offers easy joystick maneuverability, Dynamic Positioning System for station-holding while preparing lines and fenders or while waiting off a fuel jetty, as well Active Corrosion Protection and Auto-Pilot.

However, Volvo Penta's Glass Cockpit takes the overview and control of engines and navigation, including optional charts, sonar and radar (even auto-pilot) to extraordinary new heights...and all in one place.

It also extends to auto-trimming and full joystick steering whilst under way, as well as the outstanding maneuverability of SportFish mode, and the clean presentation of bait using the bypass exhaust features of Clear Wake.

IPS features progressive rate steering, twin lever electronic controls and joystick controls at the helm and in the cockpit on either the port or starboard sides. Joysticks enable low speed steering and also assist with easy docking of your yacht.



IPS systems have twin three blade nibral, counter-rotating propellers that are protected against wear by the premium coating Propspeed, and have stainless steel line cutters for protection from fishing lines, plastic bags and nets. These precision made line cutters create a very efficient cutting action to protect the propellers and shaft sealing without increasing drag or fuel burn.

The shaft-drive 575 SUV models — also with touch screen navigation features — have twin controls operating bow and stern thrusters both at the helm and aft flybridge docking station, as well as Electronic Vessel Control (EVC) levers integrating with cruise control, low speed mode and single lever mode.

Courtesy of the Quickshift gearboxes, owners of the 575 SUV shaft-drive models with your choice of Volvo D13 or with CAT C12.9 engines are able to incorporate Twin Disc's Express Joystick System (EJS) which smoothly and simultaneously actuates and controls engines, transmissions, propellers and thrusters, enabling a skipper to easily, precisely and confidently manoeuvre the yacht in close docking situations.





## The Riviera advantage

Riviera is continuing to lead the luxury motor yacht market and proudly stands behind the easy-to-use systems onboard its world-class designs.

A 5-year all Volvo Penta systems limited warranty is now standard with every new Riviera and covers Volvo Penta helm stations, steering and propellers as well as major componentry of their high performance drivelines and fuel-efficient engines.

Available worldwide, this extended warranty complements the Riviera 5-year structural limited warranty and will provide even greater peace of mind for our valued Riviera boating family members.

Riviera Family members enjoy exclusive invitations to fun-filled social and boating education events, inspiring cruising experiences as well as special offers on genuine parts, electronics and our premium Riviera lifestyle collection.



## CZone simplicity

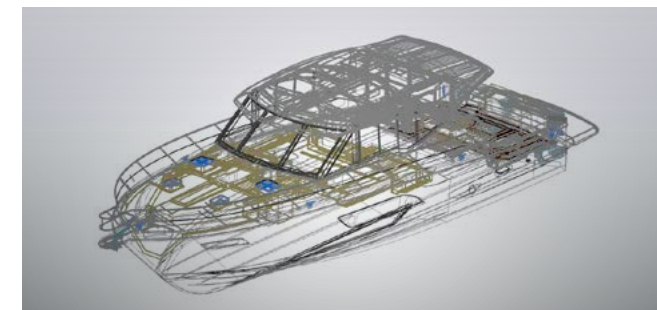
The fully integrated CZone digital switching system enhances the ease of monitoring and operation of the Riviera 575's onboard systems including tanks, and extends centralised, touch-screen control to lighting, pumps, batteries, entertainment systems and appliances.

CZone allows you to operate multiple circuits at a single touch, energising all lighting and electrics depending on your requirements. It comes pre-programmed with three modes – "entertaining", "cruising" and "dock unattended" – and these modes can be customised to suit your individual needs.

Other user-friendly features include interior light-dimming, timer controls, automated circuit control, wiper speed and wash functions. There's also a "service" mode that shuts down all power and systems.

Based on industry-proven Controller Area Network (CAN) technology, the CZone system offers DC and AC switching and over-current protection. Full systems monitoring (with alarms) including AC voltage, current, frequency and kilowatts, DC voltage, current and remaining battery capacity, along with fluid tank levels and indication for systems in operation, is clearly displayed on the 5-inch touchscreen at the helm and 10-inch colour control screen at the saloon entrance.

There's also the option of additional iPad connectivity, so you can control CZone from anywhere onboard your yacht.



## Impeccable pedigree

The confident poise of the 575 SUV is just as evident offshore as it is at anchor – her solid and robust hull with keel is the evolution of our rich 36-year heritage of building over 5200 world-class luxury motor yachts that are proven in the often challenging Australian offshore conditions.

Every Riviera built at our world-class facility on Australia's Gold Coast combines superior-strength hand lay-ups with a watertight collision bulkhead forward and independent compartments throughout the hull.

Our legendary build quality also features vinylester resin in the outer layer of lamination to increase the ability to withstand water absorption. An isophthalic gelcoat exterior provides an impeccable and hardwearing surface finish.

From the waterline down, the hull is solid GRP with reinforced bottom, keel and chines. Structural core material is used in the hull flanks, main deck and hardtop, while precisely fitted, lightweight resin transfer-moulded small parts have a double-sided gelcoat finish and are pre-fitted for a perfect seal when all major components are bonded together.

Riviera only uses 316 marine-grade stainless steel in all our exterior fastenings. All stainless steel rails feature ground and polished welds to ensure a consistently smooth and mirror finish.

Our designers have also placed a firm focus on convenient access to every key maintenance point so any issues can be quickly identified and addressed, and service costs are kept to a minimum.



Riviera 575 SUV



Option saloon layout



Standard Volvo IPS pod drive with optional Gyro



Option Volvo D13 shaft drive



## Specifications

Length Overall (inc. swim platform and bow sprit)	18.50 m	60' 8"
Hull Length (Lh to ISO8666) *	17.20 m	56' 5"
Beam (inc. gunwale)	5.13 m	16' 10"
Draft Approximate (Standard Volvo IPS drive configuration)	1.55 m	5' 1"
Dry Weight (approx.) **	27,400 kg	60,400 lb
Fuel Capacity ***	4,000 L	1,057 US gal
Water Capacity ***	750 L	198 US gal
Holding Tank Capacity ***	500 L	132 US gal
Sleeping Capacity	6 persons	
Cockpit Area	9.53 m <sup>2</sup>	102.5 ft <sup>2</sup>
Mezzanine Deck	3.60 m <sup>2</sup>	38.8 ft <sup>2</sup>
Total	13.13 m <sup>2</sup>	141.3 ft <sup>2</sup>
Bridge Clearance	3.91 m	12' 10"
Engine Options		
Volvo Penta D11-IPS950 x 2	533 kW	725 hp each
Volvo Penta D13-IPS1200 x 2	662 kW	900 hp each
Volvo D13 Shaft Drive x 2	662 kW	900 hp each
CAT C12.9 Shaft Drive x 2	735 kW	1,000 hp each

\*Specifications may vary on a regional basis.

## Specification clarification

\* Length of the hull (Lh) to ISO8666: Includes all structural and integral parts (ie. the moulded length of the hull). It excludes parts that can be removed in a non-destructive manner without affecting the structural integrity of the craft, (eg. pulpits, outdrives, driving platforms, rubbing strakes).

\*\* Dry weight represents the estimated minimum weight of a yacht with standard engines and options, no fuel or water on board, no equipment or provisions and no personnel. The stated dry weight may be exceeded.

\*\*\* Denotes net tank capacity. For useable capacity do not rely on more than 90% of tank capacity. Actual capacity will vary according to yacht trim and sea state. Speeds are subject to normal weather conditions, fuel and/or water levels, passengers and equipment loads.

## Our care for your information

Due to the constant refinement of specifications and design by Riviera Australia, the information in this document may change without notice.

Specifications may vary with time and by region.

Some images or illustrations in this brochure may include options or custom details.

Please note that as safety equipment specifications or standards vary by country, this aspect of your purchase will need to be completed by yourself and or your Riviera representative.

Please refer to your Riviera representative for specific warranty cover and the latest detailed list of inclusions and options prior to purchase.



## The Reassurance of owning a Riviera

What sets Riviera apart as one of the world's great luxury motor yacht builders?

Is it the devotion to quality, standard of materials used, the ocean-tested structural strength, unsurpassed ease of operation, or the stylish, handcrafted luxury finish? Or perhaps it's the famous culture of care that transforms owners into the 'Riviera family'.

The answer is all of the above, and more. Much, much more. Over 38 years and the building of over 5300 luxury motor yachts, the 585-strong Riviera team have been on a continuous quest of evolution and refinement.

This remarkable heritage of knowledge matched by innovation allows us to marry the best of the time proven with the exciting and new. Witness our introduction of cutting edge touch screen digital technology and joystick maneuverability, which make navigating and operating a Riviera and Belize luxury motor yacht a relaxed and enjoyable experience.

Located on the Gold Coast, Queensland, our 14-hectare, state-of-the-art manufacturing facility is the largest facility of its kind in the Southern Hemisphere. From here we build on the notable Australian qualities of strength, practicality and love of water in the continent completely surrounded by three oceans and four seas. Then we test our designs in some of the toughest offshore conditions on earth. Hardly surprising that Riviera luxury motor yachts command impressive resale values worldwide.

Today, you can choose from five individual designs that make up our fabulous collection of luxury motor yachts, the Riviera Flybridge, SUV, Sport Yacht or Sports Motor Yacht models, along with our more traditional Belize Collection. All will withstand virtually anything the elements and you can put them through, with poise and ease.

Naturally, we back this confidence with an industry-leading 5-year structural limited warranty. In addition, with all our Volvo Penta powered yachts, we offer a 5-year limited warranty covering helm station controls and multi-function displays, steering and propellers, plus pod drives and engines.

Life is too short for needless compromise. So when it comes time to invest in your next dream motor yacht, why settle for a lesser option when you can enjoy all that makes up a Riviera.







## Crafted with pride, with you in mind

Owner Care at Riviera and Belize is in a class of its own. Premium quality, professional and personal, it is all designed to be of the highest quality, in keeping with the world-class luxury motor yacht we are building specifically for you.

Like thousands of other happy owners, we are confident your every experience of dealing with us and our global representative team - from selecting your favoured options, electronics and decor, through to routine maintenance and repairs - will be conducted with the upmost respect and care.

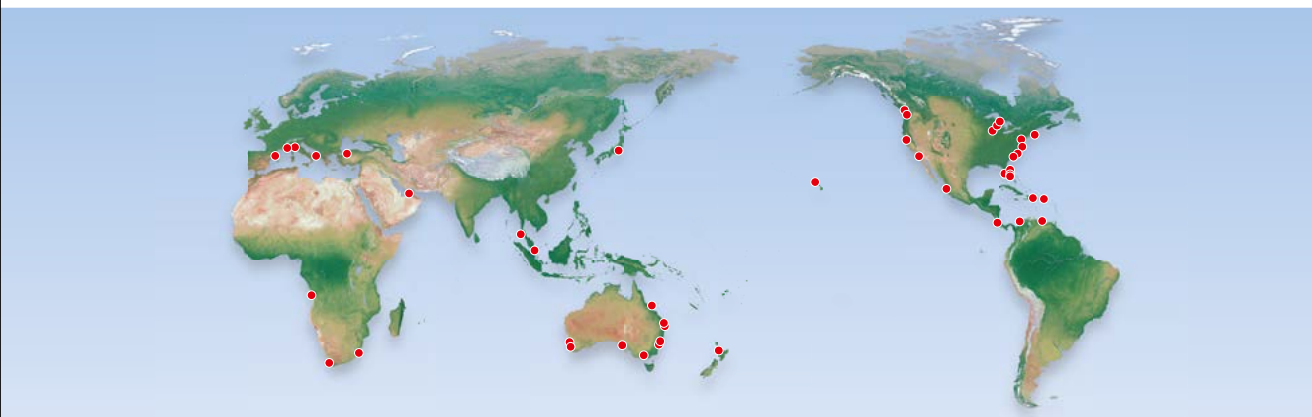
Our highly skilled team consult and partner with internationally acclaimed naval architects, designers and engineers to ensure we fully embrace the latest, most exciting industry standards and trends.

Constant communication with the worldwide family of Riviera owners also plays a vital part in helping guide and inform our new model development program.

All this pride in performance ensures Riviera will continue to exceed the evolving needs of discerning luxury motor yacht enthusiasts like you.







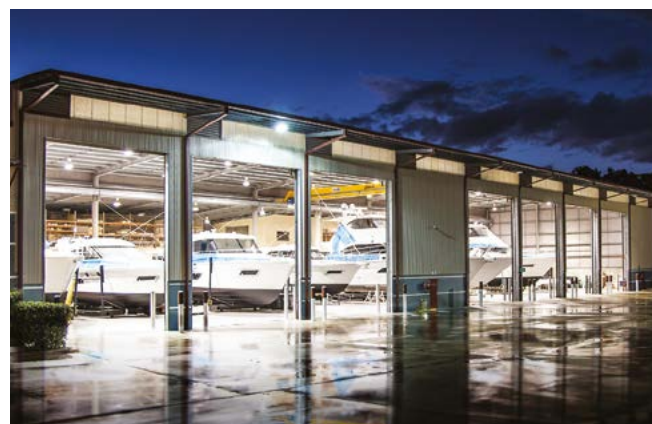
## A global marque of excellence

For nearly four decades the Riviera team have been preoccupied with the relentless pursuit of excellence. That means never being satisfied with the status quo, rather forever looking to improve and refine our knowledge base by embracing the latest technologies and work practices.

All these endeavours by our factory team and international representative network are directed towards creating a superior luxury motor yacht experience for you. They have also garnered us enormous acclaim from the global boating industry along the way.

Over the years Riviera have accumulated an impressive collection of local, national and international awards recognising 'world's best practice' across the fields of education and training, employment, innovative manufacturing techniques, export, quality of workmanship and pioneering design.

More than testimony to our passion for handcrafting superior luxury motor yachts, they are your assurance of 'The Ultimate Boating Experience' when you decide to own a Riviera.





## Electronics and systems

Electronics play an ever-increasing role in maximising the pleasure and safety of luxury motor yachts, and the choice of equipment that is available today is vast.

Selecting the equipment that meets your needs can be a very challenging task – and Riviera's electronics experts are here to assist.

We source the best systems from around the world, we help match technology to individual requirements and work closely with Riviera's international representative network to create systems that maximise your boating pleasure.

## Riviera Genuine Parts and Accessories

Our passion for quality and practical design is reflected in our exclusive and growing range of clothing, accessories and décor items created to enhance your time afloat.

If you love your Riviera, you'll feel right at home with the Riviera Collection – an extensive range of casual, stylish, comfortable, practical equipment, clothing and accessories.

The Accessory and Décor collection ranges from storm jackets to stylish crockery.

To make your Riviera truly your own, we offer a wide range of fabrics, finishes and colour schemes that enable you to personalise your motor yacht.

Of course our experienced design team is always available to advise and assist you with your individual selection.

**RivieraParts.com.au**







## The Riviera Experience

There's nothing quite like the exhilaration of blue-water cruising in company to remind our valued owners why they are so passionate about the rich and rewarding Riviera luxury life afloat.

For these are the types of passages that build the confidence and skills for people to use their yachts to their full potential, that create the very special memories that last a lifetime, and, importantly, are often the catalyst for long-lasting friendships.

Together, members of our growing global family of Riviera and Belize owners enjoy many special cruising experiences to idyllic destinations around the world — safe in the knowledge that experienced skippers and engineers are always close at hand.

We invite you to join with us for these special experiences — either to stretch your sea legs and gain offshore cruising confidence, or to simply enjoy the company of like-minded people who share an appreciation for the truly unique Riviera life.



## The Evolution of Australia's Riviera - Since 1980







2016 - 575 SUV

2016 - 5400 Sport Yacht

2015 - 57 Enclosed Flybridge

2015 - 52 Enclosed Flybridge

2015 - 525 SUV

2015 - 77 Enclosed Flybridge

2014 - 6000 Sport Yacht



2012 - Belize 54 Daybridge

2011 - Belize 54 Sedan

2011 - 4400 Sport Yacht SII

2011 - 61 Enclosed Flybridge SII

2011 - 53 Enclosed Flybridge

2010 - 43 Open Flybridge

2009 - 5000 Sport Yacht



2008 - 48 Offshore Express

2008 - 4400 Sport Yacht

2008 - 38 Open Flybridge

2007 - M470 Sport Cruiser

2007 - 4700 Sport Yacht

2007 - 45 Open Flybridge

2007 - 41 Open Flybridge



2004 - 33 Open Flybridge

2003 - 58 Enclosed Flybridge

2003 - 47 Open Flybridge SII

2003 - 42 Open Flybridge

2002 - M370 Sport Cruiser

2002 - M290 Sport Cruiser

2002 - 47 Open Flybridge SI



1998 - 48 Enclosed Flybridge SII

1998 - 36 Open Flybridge Single Cab

1997 - 34 Open Flybridge

1997 - 4000 Offshore Enclosed

1997 - 4000 Offshore Open

1996 - 43 Open Flybridge

1996 - 40 Open Flybridge Aft Cab



1989 - 44 Diavalo

1989 - 27 Targa

1989 - 27 Hardtop

1989 - 33 Open Flybridge

1988 - 52 Enclosed Flybridge

1987 - 35 Open Flybridge

1987 - 34 Diavalo



1983 - 44 Open Flybridge

1982 - 30 Open Flybridge

1982 - 30 Sedan

1980 - 38 Open Flybridge MK I



