



RIVIERA
LUXURY MOTOR YACHTS

BELIZE



Long range cruising that goes beyond anything you've experienced

Building the dream

"During the design development phase, we spoke to a number of very experienced Riviera owners from around the world. Without exception, each were seeking a new style of motor yacht.

"Their dream was a blue-water yacht featuring outstanding sports-inspired looks and sports performance. A yacht that combines sport fishing and other water sports capabilities with ultra-luxurious interiors. They were desirous of a foredeck entertainment centre and fully enclosed flybridge with internal stairs. A covered mezzanine dining area, crew cabin or utility space, plus the surety of high bulwark side decks, were considered vital inclusions.

"Ideally this would be a design they could venture offshore with complete confidence for extended periods, over hundreds even thousands of nautical miles ...

"Our new Sports Motor Yacht comprehensively delivers on their brief."



Riviera Owner, Rodney Longhurst.







Riviera Sports Motor Yacht: Redefining the class and your expectations

Forever improving, refining, evolving ... Since 1980, striving to excel, day in, day out, has been at the heart of the Riviera design experience.

Rarely though has our passionate embrace of timeless aesthetics coincided so perfectly with our restless search for next level standards of structural strength and engineering virtuosity.

Welcome to the luxury sports motor yacht collection which transcends everything you have ever dreamt of from long range, blue-water cruising.

Our new Riviera 72 Sports Motor Yacht is a stunning meld of sports looks, sports performance and sporting cockpit, renowned Riviera luxury appointments and superior offshore, extended cruising capability. All highlighted by their whisper quiet ride and super smooth running at speed. Painstakingly developed over a two-year period, they are set to redefine the class and your expectations.

In designing the hull, we partnered with esteemed naval architects, Mulder Design of the Netherlands, creators of three of the world's fastest super yachts. After extensive international tank testing, the result is a hull design that delivers a smooth, soft and dry ride in a wide range of offshore conditions.

Conceived and built in-house to our exacting standards on Australia's Gold Coast, this beautiful new series was inspired by a wish list from our global family of experienced Riviera owners seeking to strike out much further for far longer, to celebrate true long range luxury cruising the Riviera way, with loved ones and family.

A world away from the everyday, the most alluring ports and anchorages in either hemisphere are well within your reach.

Onboard your Riviera Sports Motor Yacht, you will fall under an exotic spell, revelling in glorious sights, sounds and the absolute lap of luxury - exploring, diving, snorkelling, kayaking, fishing, creating and sharing truly memorable, precious moments - for just as long as your schedule allows or heart desires.

The wide blue beyond launches from here

The Riviera 68 and 72 Sports Motor Yacht: Two uniquely specified craft that share a single vision, with the 72 even larger, grander and more spectacular still - offering greater cockpit and mezzanine space and greater standard power and fuel capacity.

So come experience your cockpit for yourself. Step easily from the dock onto the truly spacious boarding platform and enter via either of the outward opening transom doors.

Whether you're carrying luggage and supplies for the weekend, or an extended cruising period, it all starts here. What a welcome, what a sight greets you. The deck itself is an image in teak; beautiful and vast. In the near distance, meticulously sculpted shapes delight the eye and glinting stainless steel bedazzles.

Anticipation of a great journey ahead invariably builds.

In typical Riviera fashion, a wealth of practical, well considered features underpin all this expansive cockpit space and design appeal. An alloy plate reinforces a section of the floor so you can easily fit a game chair or outdoor table. The cockpit is self draining. All hatches have heavy duty lock downs and come fitted with gas struts for easy access. There is an enormous volume of storage space including large lockers in the transom, side coaming lockers and deep fish bins in the floor.

Pride of place in the cockpit - facing aft, and concealed under a moulded, gas strut-assisted lid - is the double barbecue. Equipped with LED lights and a wet bar with a sink, tapware and an insulated cool box, you're all set to serve the freshest seafood and coolest drinks you and your guests will ever enjoy.

Picture the whole family now: It's dusk at anchor in the islands. Refreshments have just been served in the cockpit. A pod of dolphins cruise by, as chatty and happy in their element as you all are in yours...

A Expansive cockpit barbecue centre **B** Cockpit access hatch to engine room
C Wide side decks with raised bulwarks and bow rail









Remarkable safety and entertaining to the fore

High wide side decks illuminated in soft blue LED light ... non-skid surfaces, thoughtfully placed 316 marine grade stainless steel handrails and a powerful surety that passenger safety comes first.

For practical reasons of anchoring and tender launching, for sightseeing, entertaining and pure unadulterated relaxation, the foredeck of your Riviera Sports Motor Yacht will attract many visitors. All will travel forward in complete safety.

Up here our designers have created a 'best of both worlds' environment.

Practically speaking, the foredeck boasts plentiful storage lockers to port and starboard discreetly hidden from view. There is a deep well built into the forward deck to ensure crew safety when accessing all anchoring equipment - including your stainless steel 80kg Ultra anchor, with its remote control vertical winch.

Should you choose to store your tender here, the 550kg davit with low profile boom and electric winch makes for secure storage and effortless unloading.

Time for a break? At anchor this fabulous entertaining area comes into its own. Take a seat in the deeply comfortable forward facing, fold out two-seater lounge, a very desirable foredeck lounge option. Now - thanks to two additional, really large fold away lounges - you've created your own U-shaped, 8-seater conversation area, complete with ice box and a removable central teak table. Cheers.

Of course the party up here has only just begun. Fortunately, there are two insulated cool boxes to port and starboard. You can turn up the volume via the dedicated foredeck four speaker stereo with smartphone interface. Alternatively should you desire a true party pavilion feel, simply choose the sun shade awning option. Glorious.

A The expansive and versatile foredeck transforms from tender storage to alfresco lounge

The sheer magic of the mezzanine

Space. The wonderfully generous dimensions our designers have had to work with in the cockpit and mezzanine area have given their talents full permission to shine. How it shows. So please, step up to the mezzanine now via the teak steps inlaid on both sides of your cockpit. Look around, there is a lot to appreciate and see.

First is the location itself: the entertaining centre of your long range cruising yacht. To see it in its full glory, simply open the two tinted and tempered glass doors that frame the space on either side, encased in their resplendent, ship-like stainless frames. Now open out the large central awning window ... here you are, centre stage in the mezzanine at its best.

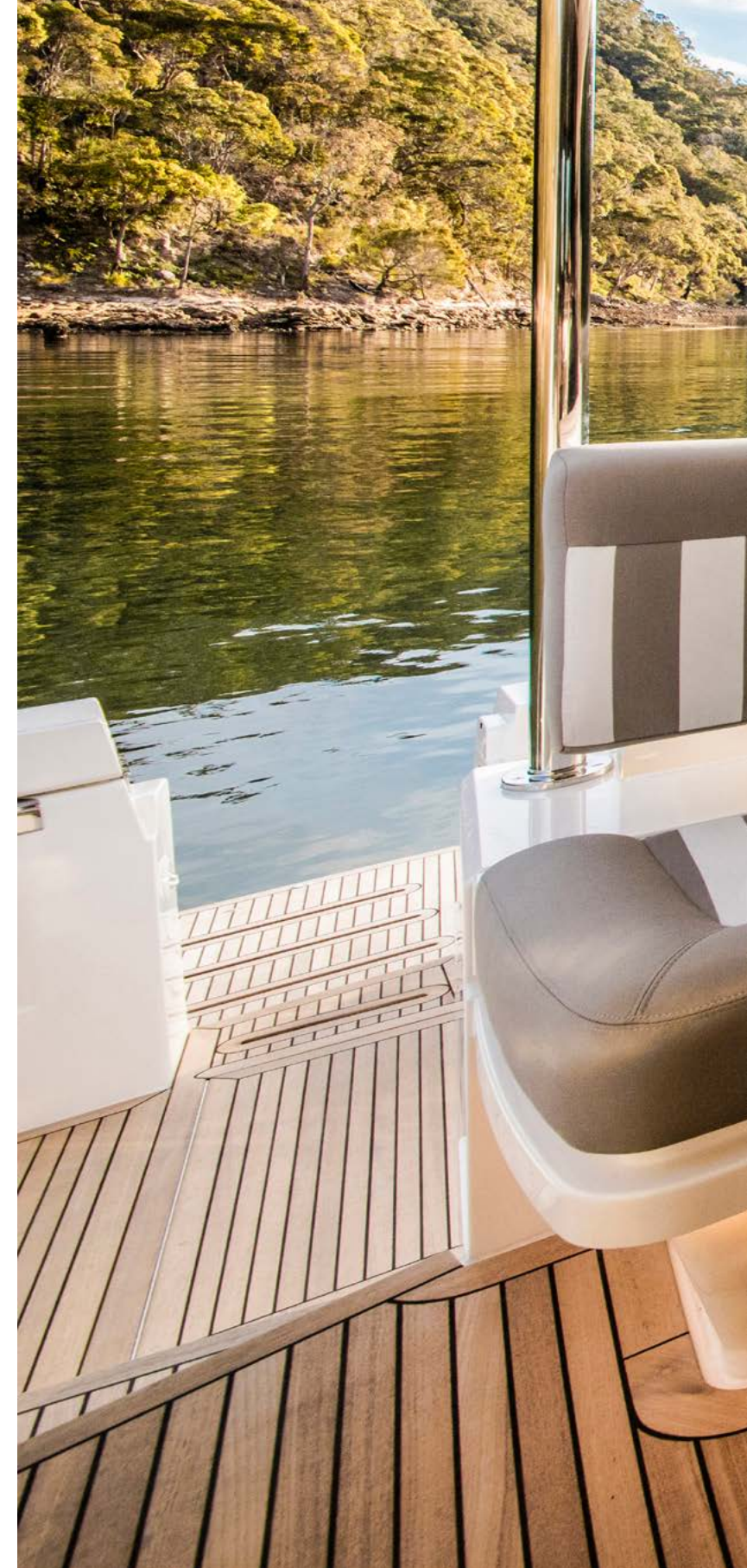
Enjoying a moment on the extremely comfortable forward facing lounge, you can see all the way through to the magnificent saloon. That is, if you can take your eyes off the alfresco luxury all around.

Your glassware and Riviera crested tableware rest on a pair of highly polished, folding teak tables. In concert with golden-coloured teak decking at your feet and soft concealed lighting above, you'll savour the central mezzanine ambience day and night. Its generous dimensions easily accommodate enough occasional furniture to invite the whole extended family.

Forward - making ingenious use of the space beneath the gleaming opened feature awning window - is your designer breakfast or conversation or sundowner bar.

With its two swing-out style bar stools, stainless steel framed solid benchtop and easy proximity to the galley, your snacks and meals are never far away. And with an ice maker and drawer storage beneath, you can always have a cooling drink at hand.

Completing the picture of uplifting lifestyle luxury is a portside, four speaker LED TV that folds down from above to entertain all gathered here - the mezzanine and cockpit in a class of its own.









A



B



C



D

A wonderfully welcome addition

From the mezzanine take the portside door and descend the staircase to the day head and adjacent crew cabin or utility room space. This area - with such easy access from the central entertaining and gathering hub - is a truly welcome design addition. Clever, convenient, inspired.

Now, using the bathroom no longer means trailing through the whole boat with wet or sandy feet. Instead, from the mezzanine move directly down stairs - note the well located washer and dryer - turn right, and there you are, in the designer aft day head. Very convenient, suitably luxurious ... What's more, a few steps away, is another welcome Riviera design addition - the versatile aft crew cabin or utility space.

This space offers you a great range of choices. You can use it to accommodate additional guests, accommodate crew, or deploy it as a utility room to store all your water a equipment.

With its own private entrance door, reverse cycle air conditioning, an option of one or two Pulman-style beds, storage locker and opening porthole, the crew cabin features a standard of appointments you expect from Riviera.

A The mezzanine port side stairs lead down to the utility room or optional crew quarters
 B The optional crew quarters design C Crew quarters ensuite and day head
 D The utility room optioned for sport fishing

Far more than a traditional galley

By any meaningful measure - its size, layout, standard of cabinetry, decor and appointments - the galley of your Riviera Sports Motor Yacht could easily pass for a fine designer kitchen.

This new galley redefines onboard expectations for reasons of location too.

Far removed from the isolated galleys and food preparation areas of old, it is situated midway between the saloon, mezzanine and cockpit. This is, thanks to the signature Riviera embrace of flowing lifestyle design, right in the centre of the mid-deck onboard universe.

So, here in this social and yes, superbly appointed hub, expect lots of company from your guests and the best kind of practical help from our designers.

A complete set of contemporary stainless steel appliances are all within easy reach, effortlessly integrated into handcrafted, stone-finish benchtops and walnut varnished Riviera joinery. Additional storage lockers with positive locking hardware are built in overhead, along with large pull out pantry drawers on commercial grade runners forward.

Helping you create gourmet meals in no time are a Miele combination oven and microwave with grill, 4-element induction cooktop with potholders and rangehood, large efficient dishwasher and four refrigeration and two freezer drawers.

Okay we can't make everybody a great cook, but we can create a great inspired space far removed from the traditional galley, to cook and socialise in. And that is exactly what we have done.









Settle into the luxurious saloon

The further afield your travels take you the more you will luxuriate in all the refinements and comfort of your saloon. At different times of the day, wherever the compass points you, it will serve as a blessed place to sit, converse, dine, conduct business, grow closer, entertain honoured guests and unwind, whilst always operating as your favourite retreat.

The large forward windscreen and the wall to wall, sliding saloon windows reveal a constantly moving panorama of sky and sea, natural and exotic sights outside. Stunning and inspiring. Inside, you deepen relationships and forge memories you will long count as highlights of a fortunate life.

The light and space our designers have had to work with has evolved into a wonderfully warm and open environment. Step into it now and look around.

Notice how peaceful and quiet everything is: this ultra desirable ambience is created by the skillful integration of sound dampening fabric and leatherette panelling. Overhead LED lighting and reverse cycle air conditioning complement the appeal.

Forward of the galley to starboard discover the L-shaped, 8-seater fine leather dinette lounge and table. Folding at both ends, built to manually slide forward or aft, and a vision in exquisitely polished timber, your table is as beautiful as it is practical.

To port your guests will rest easy in the large and fabulously comfortable designer lounge with matching reversible ottoman or coffee table. Easily viewable from here, or the dinette, is the 55-inch LED TV, rising majestically at the touch of a button forward of the galley. Residing in an adjacent cabinet cleverly hidden from view are the Blu-ray player and home theatre sound system, with five concealed surround speakers and two more in the cockpit.

What else will impress? Frankly everything: including the handcrafted internal saloon staircase leading to the flybridge and the thoughtfully located portside pantograph door giving you easy access to mooring lines, side and foredeck - and a great way to fill the saloon with fresh air.





Classic master stateroom design

Where great flexibility meets absolute luxury ... the Riviera Sports Motor Yachts have been specifically designed to fulfil your desires to go further and stay away for longer. All in the highest state of comfort. As you would expect the accommodation deck expresses this guiding philosophy in eloquent and luxurious terms with a remarkable degree of in-built design personalisation.

In essence you have an enviable choice between the four stateroom, four bathroom Classic or the three stateroom, four bathroom Presidential layout, boasting its grand full beam master stateroom.

There is also design provision on the accommodation deck for crew quarters, a teenage retreat or dedicated sports and water toy storage.

In either the classic or presidential design, your master bathroom is pure luxury; designed to make you feel totally at home, wherever in the world you may be. Riviera designers have spared no effort in creating an ensuite that goes beyond what you might expect. With a vanity cabinet that has been beautifully handcrafted, solid surface bench top, designer full-sized shower and more, the effect is both appealing and contemporary. And perhaps one of the nicest touches? A classic ocean going porthole that opens to the natural elements - thoughtfully alarmed to the helm to ensure it's shut when underway.

A true designer bathroom that lets you reinvigorate your being with tangy fresh sea air.

The choice is yours.

A delightful question to contemplate ...



Presidential master stateroom design

Looking after your needs, masterfully ... whichever layout you ultimately decide upon the keynote is pure luxury, an invitation to get away often from the everyday and stay away as long as possible. Here, in your palatial master stateroom, you will want for absolutely nothing no matter how far reaching the journey.

The master stateroom is located aft, extending full beam - including the designer ensuite - in the classic design. In the presidential design, your bathroom is located forward on the starboard side, creating an even more spacious, grander retreat.

A supremely comfortable king-sized island bed awaits as you enter this private retreat. The plush feature headboard in concert with deep pile carpet and an elegant array of LED lighting overhead, make for a warm welcome. Grain-matched bedside tables with leather inlays and a highly polished timber drawer unit running full length to port showcase the expanse and our designers' talents.

Naturally, both the master and ensuite feature reverse cycle air conditioning. However ... large hull picture windows framing either side, fill the space with natural light and a special feeling of being at one with your natural surrounds. A feeling accentuated on balmy days by fresh fragrant air from the opening portholes.

How about storage? Well, we've counted on you being away for extended periods. You'll discover roomy drawers under the king sized island berth, as well as a gas assisted lift for bulk storage. Then there are the pair of extremely handsome cedar-lined hanging lockers with shoe shelves, full length hanging space and a thoughtful Riviera extra ... a safe for your valuables.

Relax and unwind. Your 40-inch LED TV, Blu-ray player and home theatre system with 5 speakers is standing by, waiting to entertain: to take you on a different kind of voyage.

In the presidential design, with all that extra space at your disposal (with your bathroom forward to starboard), enjoy the views, a book, a quiet moment or an intimate breakfast, with facing seats around a timber writing and beauty bureau with leatherette inlay.









The large, very accommodating guest staterooms

The Riviera Sports Motor Yacht exemplifies luxury on a large and ambitious scale, not least for the family and friends who join you on your grand adventures. Look forward to accommodating them in first class fashion in either the forward VIP guest stateroom with its private ensuite, or the main port guest stateroom with combination ensuite and two-way entry day head.

Should you decide on the classic layout you have a third option, namely the starboard guest stateroom with twin adult-size Pullman berths.

The air conditioned VIP stateroom features appointments befitting its name: private entry, a walk-around queen-sized bed, stunning Riviera cabinetry, cedar-lined hanging locker to starboard with shelving and auto LED lighting, plus cedar-lined storage locker to port. All framed by spectacular fixed hull windows to port and starboard in tinted and tempered glass.

Guests enjoy a skilfully crafted VIP ambience and appreciate the high quality entertainment courtesy of the 32-inch LED TV and home theatre system with two speakers and iPod interface.

The adjoining VIP ensuite is a wholly contemporary designer space boasting cool clean lines and five star decor. Guests luxuriate in peerless Riviera appointments including a handcrafted vanity cabinet, full-sized shower with frameless glass door and even heated towel rails.

In the guest stateroom to port air conditioned luxury also predominates, albeit with a unique and inspired touch of sleeping flexibility. Once again that's deep pile carpet underfoot and LED lighting overhead. There is a LED TV and entertainment centre, cedar-lined hanging locker and ellipse-shaped bonded-glass port window, although this time it has a striking opening porthole at its centre.

Side by side berths conceal lots more storage beneath and a wonderful surprise built-in. Simply touch a button and the berths will smoothly slide together to form a beautiful, restful double. Now, that's clever Riviera design in action.

Here, a combination ensuite and two-way entry day head complete a pampered guest experience. As with the VIP ensuite, guests are always pleasantly surprised by the space, luxuries and design flair - a frameless, full sized shower, designer vanity, solid surface bench top and large mirrors.



A and B Port guest stateroom offers versatility as twin single berths slide together to create a double



A classic addition

In the classic design your additional accommodation option, the starboard guest stateroom - with adjoining day head - features two adult-sized Pulman-style beds, bedside table, plush carpet, cedar-lined hanging locker with LED lighting, reverse-cycle air conditioning and private entrance door.

When the finest materials meet superior flair and commitment, true luxury is created. That's exactly what you and your guests will experience on the accommodation deck of these unique yachts.

The sensational flybridge

Ascend the grand internal staircase (with its polished walnut treads) from the saloon, you arrive in the flybridge. Open the polished, stainless steel encased door and you step out into a glorious entertaining, relaxation and docking space.

There is so much that is exciting and innovative about your flybridge, it is a story needing to be told in two parts: the four-sided, enclosed flybridge and aft flybridge deck area.

The flybridge beyond anything you've ever experienced. Light and space courtesy of wrap-around glass defines life here. It's a feeling of being on top of the world, a feeling made to experience time and again.

Something else is apparent right away too. Or more accurately, completely missing - engine noise - especially at speed. The flybridge of the Riviera Sports Motor Yacht, indeed every part of these astonishing craft, are w-h-i-s-p-e-r quiet ... even when the magnificent twin MAN V12 engines are in full flight.

Strategically located stainless steel grab rails make moving around this space, even at speed, nice and easy. Come on then, the flybridge's L-shaped leather designer lounge with matching ottoman coffee table is looking for company. Sit down, enjoy the plush comfort, pour yourself a cool drink from the refrigerator drawer nearby and stay awhile. A fold-out double bed provides additional accommodation for overnight guests.

Feel the urge for entertainment, either on a personal or celebration party scale? Standing by - housed in its custom made, highly crafted timber cabinet - is the 32 inch LED TV entertainment centre with iPod interface and six dedicated speakers.

In concert with the adjacent, large opening rear awning window, clever design has made flowing, inside-out flybridge living possible - an upstairs equivalent of the signature flowing saloon, mezzanine and cockpit areas below. Underway this is the place to be out in the fresh air, at one with sky and sea. At anchor, it serves as a splendid private breakfast retreat or 'boutique' entertaining area.

Some owners prefer the striking teak decking option, others the low maintenance GRP. All approve of the overhead LED lighting, red night light and flood lights to the cockpit, while the sporting minded welcome the eight rod holders on the aft rail.

There you are now sharing conversation friendship around the folding teak feature table, resplendent on its gleaming stainless steel pedestal. The nearby wet bar, equipped with fridge drawer, ice maker, sink and bench top for easy preparation, ensures a constant supply of food and drinks that keep the party flowing.

The aft deck is a place where the latest technology driving these yachts is also on display. It provides excellent visibility for docking or sport fishing by providing finger tip joystick control with electric steering and state of the art electronic and engine systems. Docking a Riviera Sports Motor Yacht into even the tightest marina berth is just like reverse parking your car.

True Riviera ease.





Technology-enabled lifestyle and operation

Riviera's enthusiastic adoption of technology to enhance both onboard lifestyle and ease of operation is evident right throughout this flagship, not least in the flybridge and helm areas.

Two outstanding examples: a touch button electric sunroof housed in the flybridge headliner - with heat film tinted glass - opens the space, and the senses, to blue sky and the natural elements.

Next, putting your skipper and crew in single-glance control are cameras to the saloon, bow anchor, cockpit and engine room - with direct feeds to your helm navigation screens, and potential for future electronics' integration.

These are but two examples of Riviera-style technology application. Effortless, easy and considered.

The pure joy of being in command

The priceless feeling of being in charge of an exquisitely crafted piece of machinery, every facet in harmony performing precisely as it should, is now something you can experience offshore, every time you slide behind the wheel of your Sports Motor Yacht.

Look at all that cutting edge, touchscreen technology on the helm dash and at your side ... all of it fingertip control, all designed to harmonise perfectly with everything below in the engine room. Being skipper here is very rewarding and just so easy.

The Sports Motor Yacht collection is shaft-driven with power provided by a choice of highly spirited, famously reliable twin MAN V12 engines. Few cruising experiences compare with the pure joy and thrill of being in command of one of these craft. It is all designed to make you (or your crew) feel you are in total control, skippering a yacht of considerably smaller size.

Seating and steering: Slide into Norsap fully adjustable helm and companion chairs, made for extended time at the helm with folding arm and foot rests, deeply comfortable black upholstery and silver saddle stitching. The hand-bound leather and chrome steering wheel feels, well, perfect to the touch.

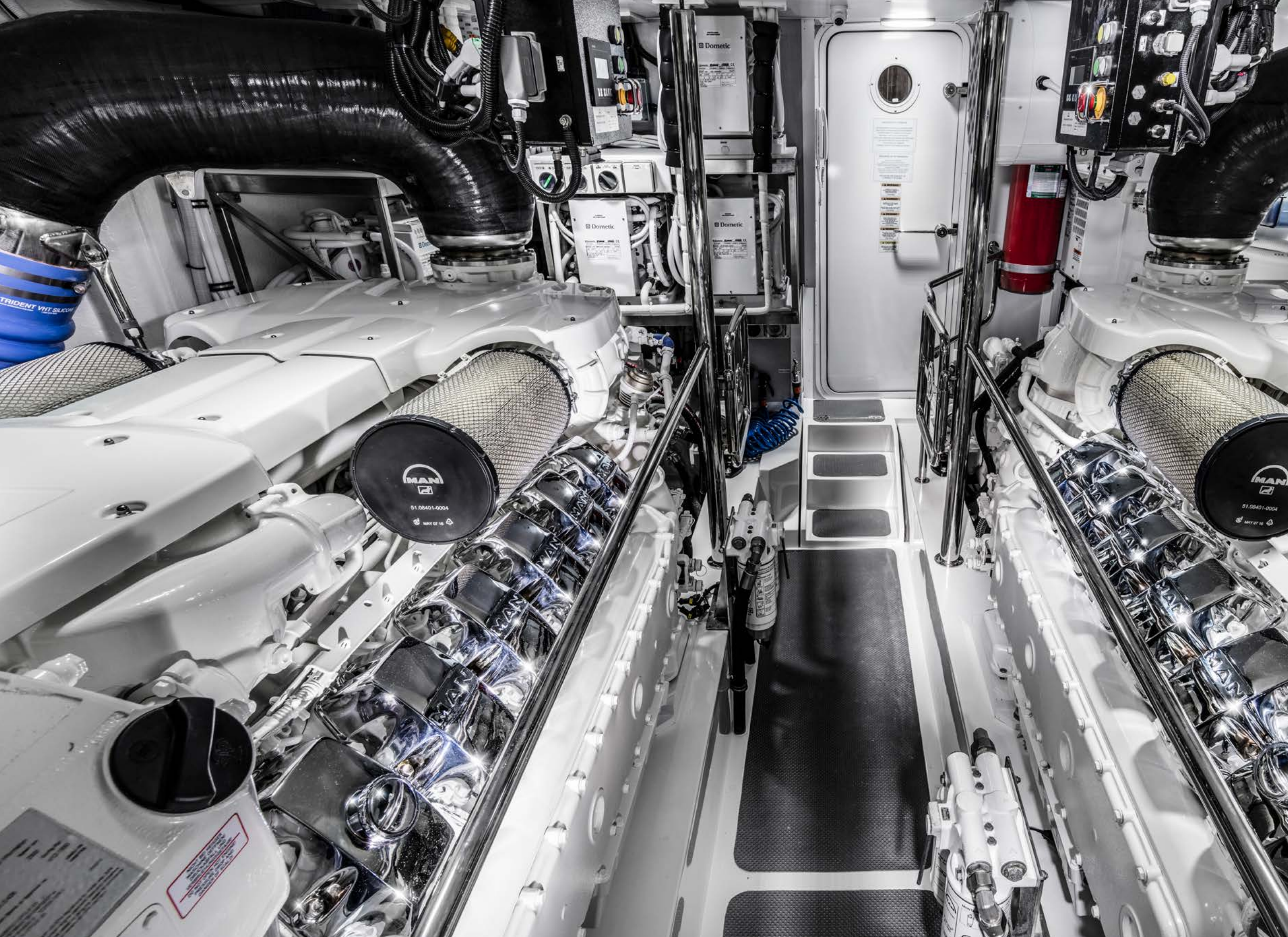
The instrumentation: To port, Riviera signature timber cabinetry house vital electronics with circuit breaker protection, an intercom to the galley and engine room. At your side, to starboard, the EIS joystick is at hand, as are Twin Disc Quickshift controls and main helm electronic steering.

On the dash in front, below the massive curved windscreen with its three wiper system, exactly where you need them, reside the world's most advanced, easiest-to-operate-and read touchscreen navigation, radar and electronic engine controls.

You will note the comprehensive range of factory-fitted, custom electronic packages encompassing everything from radar to underwater lights, to help you personalise your dream long range cruising experience.









Engineering beyond comparison

Which manufacturer of world class engines would drive the long distance yacht of our owners' dreams? From the myriad of decisions we faced during planning and design phases, this was the most crucial.

It was a decision that affected everything: sports performance, comfort, range, every offshore journey - and everyone onboard. It had to be 100% right.

Behind the watertight entry door you'll discover a full stand-up engine room ... an engine room boasting acoustic and thermal insulation, LED lighting, non-slip walkways, a secondary access point for service personnel from the cockpit ... all spotless and gleaming. An engine room worthy of housing legendary twin 1800hp V12 MAN diesel engines coupled to V-drive Seatorque shafts, as standard - the best of the best.

Ultimately, deciding on MAN was an easy decision. Their high tractive power, compact design, impressive fuel economy and unrivalled reliability were all strong recommendation. But something extra, something beyond drove our final decision ... To see it for yourself, look closely at the sophisticated MAN technology and superior design sense you see showcased opposite ...

The Riviera 72 Sports Motor Yacht features aft docking stations with Twin Disc hydraulic thrusters with station-hold among its systems. The 1800hp MAN engines with V-drives and Seatorque shafts - with a 1900hp option - deliver unprecedented new levels of smoothness. The low sound levels - just mid-60dba in the bridge at cruise - and lack of vibration, creates a truly first-class experience.

Next generation CZone digital switching interfaces with iPads to offer total and monitoring control. Like all the sophisticated new technology you see incorporated in the engine room - indeed right throughout these craft - it is easy to use and designed to make the lives of everyone onboard, skippers and guests alike, richer and more fulfilling.

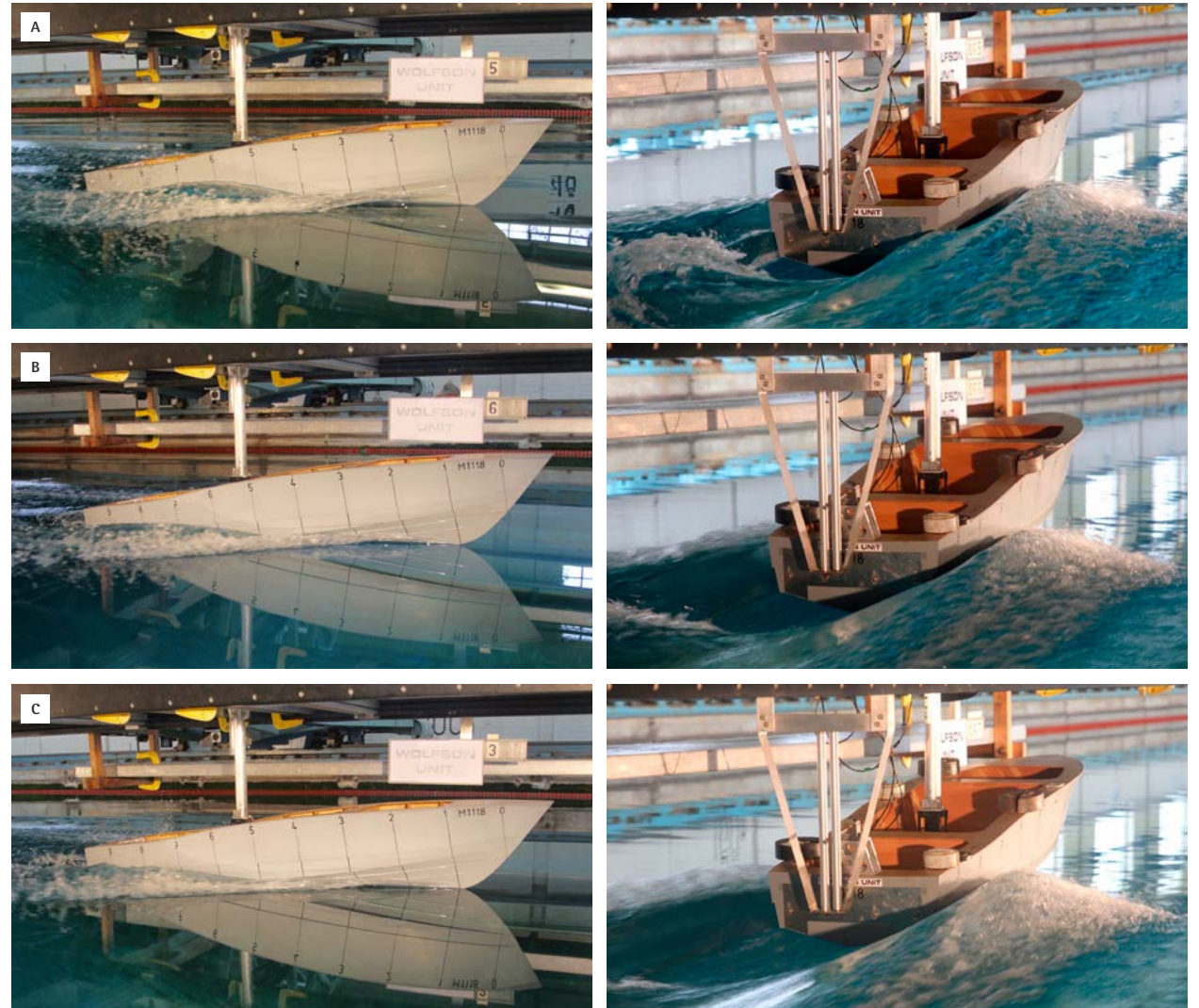
We went beyond so you can too: in complete safety, luxury and confidence.

Engineering excellence

Each model features a full stand-up engine room, while the strong and superior strength hull has been developed by the Riviera design team in collaboration with Frank Mulder Design in the Netherlands – three-time naval architects of the 'Fastest Yacht in the World'.

We have also tank-tested the hull at the Wolfson Unit for Marine Technology and Industrial Aerodynamics at the University of Southampton, England to ensure we have maximised hull efficiency and performance.

Shown here is the tank test model running at a simulated 35 knots.



The tank test model running at varying simulated speeds:
A 25 knots B 30 knots C 35 knots



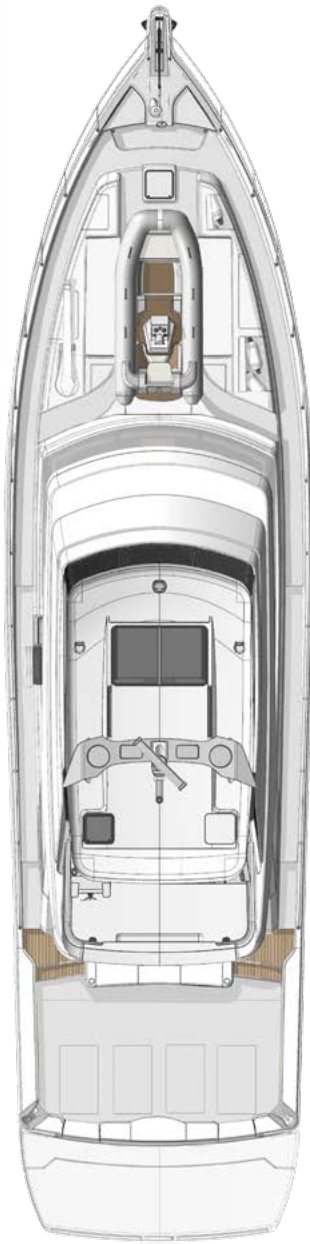
Electrical excellence

All batteries onboard the Sports Motor Yacht are maintenance-free to ensure carefree boating and are housed in special battery boxes in accordance with American Boating and Yacht Council (ABYC) and the European Union's CE industry standards.

The house power is 24-volt, which allows for simpler charging, lower current draw and smaller cables (further reduced weight) than equivalent 12-volt systems. The Mastervolt inverter provides power to the icemaker, entertainment systems and all outlets onboard.

LED lighting is utilised throughout and provides trouble-free boating while reducing electrical current draw. The lamps use less than 10 per cent of the power required to run a halogen lamp – no bulbs mean no maintenance and long service life. Additionally, Residual Current Device/Ground Fault Circuit Interrupter (RCD/GFCI) provides protection over the entire yacht and also complies with ABYC and CE standards.

Riviera 72 Sports Motor Yacht



Optional extended swim platform



Hydraulic 550kg Davit standard



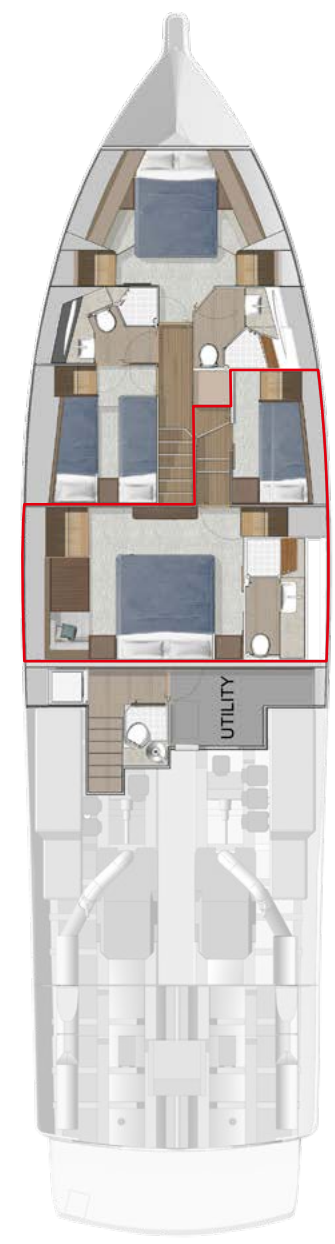
Optional forward deck design



Standard forward deck design



Classic design and utility room



Presidential design

Specifications

Length Overall <small>(inc. swim platform and bow sprit)</small>	23.68 m	78' 3"
Hull Length (Lh to ISO8666) *	22.02 m	72' 3"
Beam <small>(inc. gunwale)</small>	6.00 m	19' 8"
Maximum Draft <small>(inc. props)</small>	1.86 m	6' 1"
Dry Weight <small>(approx.)</small> **	47,000 kg	103,600 lbs
Fuel Capacity ***	9,000 L	2,378 US gal
Water Capacity ***	1,000 L	264 US gal
Holding Tank Capacity ***	600 L	159 US gal
Sleeping Capacity	8 persons	
Cockpit Area	16.32 m ²	175.7 ft ²
Mezzanine Deck	11.55 m ²	124.3 ft ²
Total	27.87 m ²	300 ft ²
Bridge Clearance	6.45 m	21' 2"
Standard Engine		
MAN V12-1800 x 2	1,324 kW	1,800 hp each
Engine Option		
MAN V12-1900 x 2	1,397 kW	1,900 hp each

*Specifications may vary on a regional basis.

Specification clarification

* Length of the hull (Lh) to ISO8666: Includes all structural and integral parts (ie. the moulded length of the hull). It excludes parts that can be removed in a non-destructive manner without affecting the structural integrity of the craft, (eg. pulpits, outdrives, driving platforms, rubbing strakes).

** Dry weight represents the estimated minimum weight of a yacht with standard engines and options, no fuel or water on board, no equipment or provisions and no personnel. The stated dry weight may be exceeded.

*** Denotes net tank capacity. For useable capacity do not rely on more than 90% of tank capacity. Actual capacity will vary according to yacht trim and sea state. Speeds are subject to normal weather conditions, fuel and/or water levels, passengers and equipment loads.

Our care for your information

Due to the constant refinement of specifications and design by Riviera Australia, the information in this document may change without notice.

Specifications may vary with time and by region.

Some images or illustrations in this brochure may include options or custom details.

Please note that as safety equipment specifications or standards vary by country, this aspect of your purchase will need to be completed by yourself and or your Riviera representative.

Please refer to your Riviera representative for specific warranty cover and the latest detailed list of inclusions and options prior to purchase.

The Reassurance of owning a Riviera

What sets Riviera apart as one of the world's great luxury motor yacht builders?

Is it the devotion to quality, standard of materials used, the ocean-tested structural strength, unsurpassed ease of operation, or the stylish, handcrafted luxury finish? Or perhaps it's the famous culture of care that transforms owners into the 'Riviera family'.

The answer is all of the above, and more. Much, much more. Over 38 years and the building of over 5300 luxury motor yachts, the 585-strong Riviera team have been on a continuous quest of evolution and refinement.

This remarkable heritage of knowledge matched by innovation allows us to marry the best of the time proven with the exciting and new. Witness our introduction of cutting edge touch screen digital technology and joystick maneuverability, which make navigating and operating a Riviera and Belize luxury motor yacht a relaxed and enjoyable experience.

Located on the Gold Coast, Queensland, our 14-hectare, state-of-the-art manufacturing facility is the largest facility of its kind in the Southern Hemisphere. From here we build on the notable Australian qualities of strength, practicality and love of water in the continent completely surrounded by three oceans and four seas. Then we test our designs in some of the toughest offshore conditions on earth. Hardly surprising that Riviera luxury motor yachts command impressive resale values worldwide.

Today, you can choose from five individual designs that make up our fabulous collection of luxury motor yachts, the Riviera Flybridge, SUV, Sport Yacht or Sports Motor Yacht models, along with our more traditional Belize Collection. All will withstand virtually anything the elements and you can put them through, with poise and ease.

Naturally, we back this confidence with an industry-leading 5-year structural limited warranty. In addition, with all our Volvo Penta powered yachts, we offer a 5-year limited warranty covering helm station controls and multi-function displays, steering and propellers, plus pod drives and engines.

Life is too short for needless compromise. So when it comes time to invest in your next dream motor yacht, why settle for a lesser option when you can enjoy all that makes up a Riviera.



Crafted with pride, with you in mind

Owner Care at Riviera and Belize is in a class of its own. Premium quality, professional and personal, it is all designed to be of the highest quality, in keeping with the world-class luxury motor yacht we are building specifically for you.

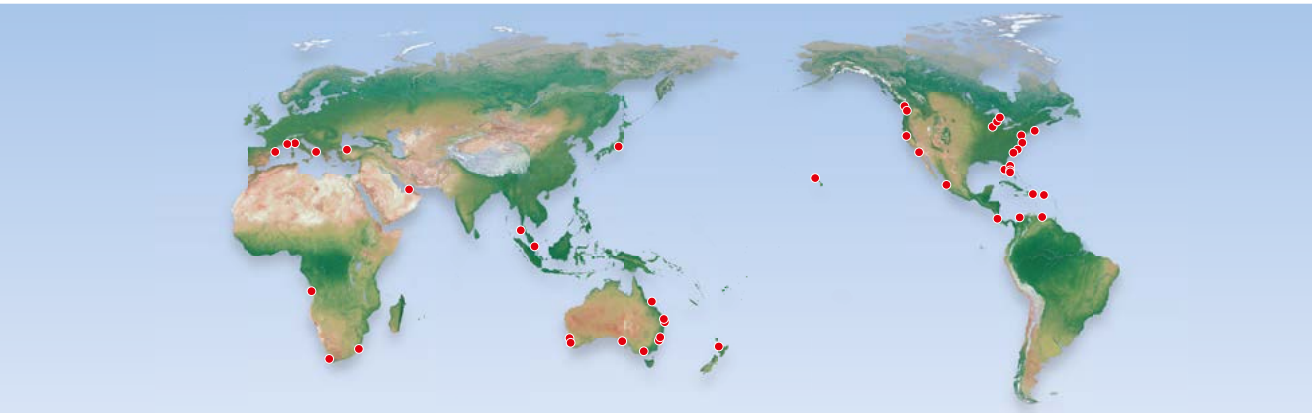
Like thousands of other happy owners, we are confident your every experience of dealing with us and our global representative team - from selecting your favoured options, electronics and decor, through to routine maintenance and repairs - will be conducted with the upmost respect and care.

Our highly skilled team consult and partner with internationally acclaimed naval architects, designers and engineers to ensure we fully embrace the latest, most exciting industry standards and trends.

Constant communication with the worldwide family of Riviera owners also plays a vital part in helping guide and inform our new model development program.

All this pride in performance ensures Riviera will continue to exceed the evolving needs of discerning luxury motor yacht enthusiasts like you.





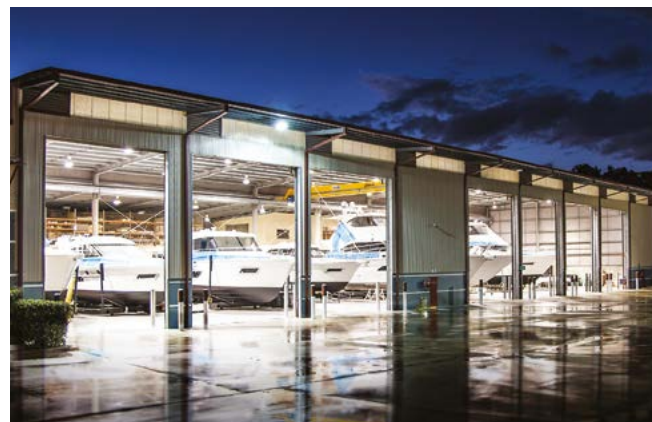
A global marque of excellence

For nearly four decades the Riviera team have been preoccupied with the relentless pursuit of excellence. That means never being satisfied with the status quo, rather forever looking to improve and refine our knowledge base by embracing the latest technologies and work practices.

All these endeavours by our factory team and international representative network are directed towards creating a superior luxury motor yacht experience for you. They have also garnered us enormous acclaim from the global boating industry along the way.

Over the years Riviera have accumulated an impressive collection of local, national and international awards recognising 'world's best practice' across the fields of education and training, employment, innovative manufacturing techniques, export, quality of workmanship and pioneering design.

More than testimony to our passion for handcrafting superior luxury motor yachts, they are your assurance of 'The Ultimate Boating Experience' when you decide to own a Riviera.



Electronics and systems

Electronics play an ever-increasing role in maximising the pleasure and safety of luxury motor yachts, and the choice of equipment that is available today is vast.

Selecting the equipment that meets your needs can be a very challenging task – and Riviera's electronics experts are here to assist.

We source the best systems from around the world, we help match technology to individual requirements and work closely with Riviera's international representative network to create systems that maximise your boating pleasure.



Riviera Genuine Parts and Accessories

Our passion for quality and practical design is reflected in our exclusive and growing range of clothing, accessories and décor items created to enhance your time afloat.

If you love your Riviera, you'll feel right at home with the Riviera Collection – an extensive range of casual, stylish, comfortable, practical equipment, clothing and accessories.

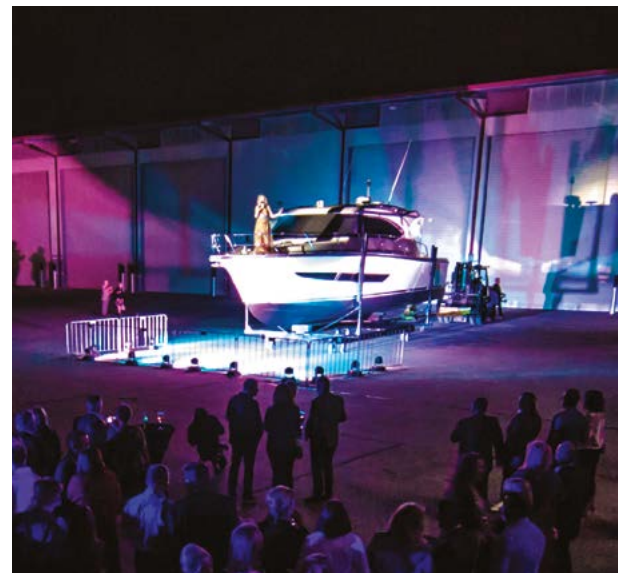
The Accessory and Décor collection ranges from storm jackets to stylish crockery.

To make your Riviera truly your own, we offer a wide range of fabrics, finishes and colour schemes that enable you to personalise your motor yacht.

Of course our experienced design team is always available to advise and assist you with your individual selection.

RivieraParts.com.au





The Riviera Experience

There's nothing quite like the exhilaration of blue-water cruising in company to remind our valued owners why they are so passionate about the rich and rewarding Riviera luxury life afloat.

For these are the types of passages that build the confidence and skills for people to use their yachts to their full potential, that create the very special memories that last a lifetime, and, importantly, are often the catalyst for long-lasting friendships.

Together, members of our growing global family of Riviera and Belize owners enjoy many special cruising experiences to idyllic destinations around the world – safe in the knowledge that experienced skippers and engineers are always close at hand.

We invite you to join with us for these special experiences – either to stretch your sea legs and gain offshore cruising confidence, or to simply enjoy the company of like-minded people who share an appreciation for the truly unique Riviera life.

The Evolution of Australia's Riviera - Since 1980



2019 - Belize 66 Daybridge



2018 - Belize 66 Sedan



2018 - 39 Sports Motor Yacht



2018 - 395 SUV



2018 - 72 Sports Motor Yacht



2017 - 68 Sports Motor Yacht



2016 - 4800 Sport Yacht



2014 - 515 SUV



2013 - 565 SUV



2013 - 63 Enclosed Flybridge



2013 - 63 Open Flybridge



2013 - 50 Enclosed Flybridge



2012 - 445 SUV



2012 - 75 Enclosed Flybridge



2009 - 70 Enclosed Flybridge



2009 - 5800 Sport Yacht



2009 - 43 Offshore Express



2009 - 3600 Sport Yacht SII



2008 - 61 Enclosed Flybridge SI



2008 - 56 Open Flybridge



2008 - 51 Enclosed Flybridge SII



2006 - 56 Enclosed Flybridge



2005 - M360 Sport Cruiser



2005 - 60 Enclosed Flybridge



2005 - 47 Enclosed Flybridge



2005 - 3600 Sport Yacht SI



2004 - M400 Sport Cruiser



2004 - 51 Open Flybridge



2001 - M430 Sport Cruiser



2001 - 37 Open Flybridge



2000 - 40 Open Flybridge



2000 - M3350 Open Flybridge



1999 - 3000 Offshore SII



1999 - M3850 Open Flybridge



1999 - 3000 Offshore SI



1996 - 39 Open Flybridge



1995 - 3300 Open Flybridge



1993 - 48 Enclosed Flybridge SI



1993 - 36 Open Flybridge Twin Cab



1992 - 48 Open Flybridge



1991 - 42 Open Flybridge



1991 - 39 Open Flybridge



1987 - 33 Open Flybridge



1987 - 27 Open Flybridge



1986 - 38 Open Flybridge MK II



1985 - 52 Open Flybridge



1985 - 46 Open Flybridge



1984 - 32 Open Flybridge



1983 - 34 Open Flybridge MK I



2016 - 575 SUV



2016 - 5400 Sport Yacht



2015 - 57 Enclosed Flybridge



2015 - 52 Enclosed Flybridge



2015 - 525 SUV



2015 - 77 Enclosed Flybridge



2014 - 6000 Sport Yacht



2012 - Belize 54 Daybridge



2011 - Belize 54 Sedan



2011 - 4400 Sport Yacht SII



2011 - 61 Enclosed Flybridge SII



2011 - 53 Enclosed Flybridge



2010 - 43 Open Flybridge



2009 - 5000 Sport Yacht



2008 - 48 Offshore Express



2008 - 4400 Sport Yacht



2008 - 38 Open Flybridge



2007 - M470 Sport Cruiser



2007 - 4700 Sport Yacht



2007 - 45 Open Flybridge



2007 - 41 Open Flybridge



2004 - 33 Open Flybridge



2003 - 58 Enclosed Flybridge



2003 - 47 Open Flybridge SII



2003 - 42 Open Flybridge



2002 - M370 Sport Cruiser



2002 - M290 Sport Cruiser



2002 - 47 Open Flybridge SI



1998 - 48 Enclosed Flybridge SII



1998 - 36 Open Flybridge Single Cab



1997 - 34 Open Flybridge



1997 - 4000 Offshore Enclosed



1997 - 4000 Offshore Open



1996 - 43 Open Flybridge



1996 - 40 Open Flybridge Aft Cab



1989 - 44 Diavalo



1989 - 27 Targa



1989 - 27 Hardtop



1989 - 33 Open Flybridge



1988 - 52 Enclosed Flybridge



1987 - 35 Open Flybridge



1987 - 34 Diavalo



1983 - 44 Open Flybridge



1982 - 30 Open Flybridge



1982 - 30 Sedan



1980 - 38 Open Flybridge MK I

